

COMMERCIAL VEHICLE ENFORCEMENT UNIT (9/5-9/11)

NORTHWEST SECTOR:

Details:

- **9/7 Colchester NB RA, I-89, 6 Inspectors screened 417 vehicles. They completed 21 inspections which resulted in 28 vehicle and 7 driver violations. Two vehicles were placed out of service.**
- **9/8 Highgate POE, I-89, 2 Inspectors screened 43 vehicles. They completed 9 inspections which resulted in 11 vehicle violations. One vehicle was placed out of service.**
- **9/8 Ira, US Rte 4W, 4 Inspectors screened 143 vehicles. They completed 12 inspections which resulted in 9 vehicle and 5 driver violations.**
- **9/10 Ferrisburgh, US Rte 7, 2 Inspectors screened 55 vehicles. They completed 6 inspections which resulted in 5 vehicle violations.**

Crashes:

- **Nothing to report.**

Notables:

- **9/7 Inspector inspected a dump truck hauling a trailer loaded with concrete building materials at the Colchester detail. The inspection revealed both concrete objects weighed more than 2000 lbs. and were only secured with one binding. Neither object was braced/blocked against forward movement. The trailer was placed out of service for the defects and the driver remedied the defect.**



- **9/8 Inspector inspected an interstate tractor trailer at the Highgate detail. The trailer was placed out of service for a flat tire.**



- **9/10 Inspector inspected a tractor trailer on VT Rte. 22a in Orwell. The trailer was placed out of service for loose cargo and the passenger side rear turn signal was inoperable.**



- **9/10 Inspector assisted Winooski PD with a tractor trailer that ran over several parking meters and left the scene. The CDL operator had issues with his CDL that required a DMV response.**

Passenger Carrier:

- **Nothing to report.**

NORTHEAST SECTOR:

Details:

- **9/8 Waterford Welcome Center, I-91 South. Five Inspectors screened 135 vehicles. Twenty-two inspections were completed. Nineteen vehicle (four out of service) and eight driver (one out of service) violations were discovered.**

Crashes:

- **Nothing to report.**

Notables:

- **9/7 Wells River, I-91. An Inspector conducting a Level 1 inspection placed the CMV out of service for defective air brake hoses. The air brake hoses had damage from chafing which met the criteria to be placed out of service.**



- **9/7 Wells River, US Rte 302. An Inspector conducting a Level 1 inspection placed the CMV out of service for a loose pitman arm on the steering box output shaft. As seen below, the Inspector noticed the Inspector's best friend, DPR (dry powdery rust), around the union and verified it was loose during inspection.**



- **9/8 Waterford detail. An Inspector placed a CMV trailer out of service for a flat tire.**



- **9/8 Waterford detail. An Inspector stopped a CMV that had passed by the detail area without stopping. The driver was advised that most Vermont fixed site details do not have flashing lights. An inspection was conducted and a warning was issued.**



- **9/8 Waterford detail. An Inspector conducting a Level 1 inspection on a box truck placed the CMV out of service for no operating authority. The property carrying motor carrier had failed to file their insurance paperwork resulting in the suspension of their operating authority. The carrier attempted to provide a second US DOT number but that carrier was under a federal out of service order for failing to submit to a new entrant audit. The CMV was towed back to the terminal in Littleton, NH and a ticket was issued to the company.**

- **9/8 Waterford detail. An Inspector weighed and inspected a six axle CMV transporting logs. The CMV was found to be 5,000 lbs overweight. A ticket was issued to the company.**



- **9/7 Wells River, US Rte 302. An Inspector conducting a Level 1 inspection placed the CMV out of service for defective suspension components. The U-bolts securing the axle to the suspension were loose.**



New Entrant:

- **Nine carriers contacted regarding audit, document uploads, inactivation, or closeout. Three audits completed. 24 hours.**

Passenger Vehicles:

- No activity reported.

SOUTH SECTOR:

Details:

- **9/7 Bridgewater WIMS, US Rte 4, 6 Inspectors screened 68 vehicles. They completed 9 Level 1 inspections, 1 level 2 inspection and 2 level 3 inspections which resulted in 6 vehicle violations. One CVSA decal was issued, and 3 permits were checked.**



- **9/8 Sharon, I-89N, 6 Inspectors screened 220 vehicles. They completed 7 Level 1 inspections, 2 Level II inspections and 2 Level III inspections which resulted in 3 driver violations and 19 vehicle violations; 1 vehicle was placed Out-of-Service. Ten over-dimension permits were checked.**



- **9/10 Bethel, VT Rte 107, 3 Inspectors screened 53 vehicles and completed 12 inspections. Seven driver violations with 2 drivers being placed of service along with 31 vehicle violations and 7 vehicles being placed out of service.**



Crashes:

- **Nothing to report.**

Notables:

- **9/7 Inspector discovered a loose body mount on a frame rail at the Bridgewater detail.**



- **9/7 Inspector discovered chaffed/ degraded air lines at the Bridgewater detail. The reinforcement ply was not yet visible.**



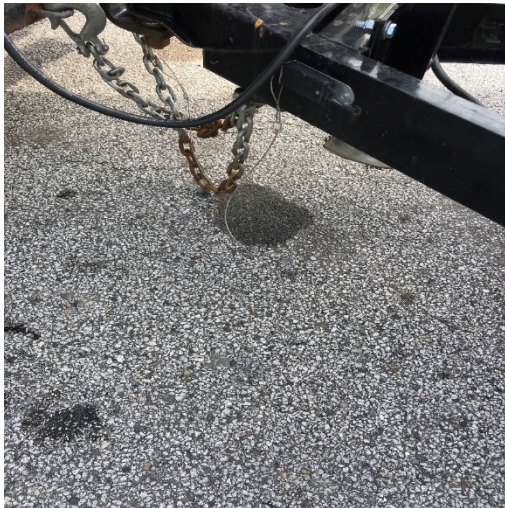
- **9/8 Inspector discovered one of the four locking pins on a sliding trailer suspension were not engaged during an inspection at the Sharon detail. The driver corrected the defect and continued the trip.**



- **9/8 Inspector stopped a CMV that had driven by the Sharon detail. The CMV was escorted off the highway where a level 1 inspection was completed. The trailer was missing a hub cap which allowed open view into the hub assembly. Both the truck and trailer were ultimately placed out of service.**



- **9/8 Inspector discovered a broken emergency break away cable during an inspection at the Sharon detail. The trailer was also not registered. Several other violations were also noted, the carrier was issued a ticket and the trailer was placed out of service.**



- **9/8 Inspector stopped a truck and trailer from Louisiana for failing to pull into the Sharon detail on I-89. The driver reported that he did not have to pull into the detail because he was empty. A roadside inspection was conducted.**
- **9/8 Inspector discovered one tire of a dual set was worn unevenly and measured 0-2/32" in various locations.**



- **9/8 Inspector discovered a deformed rear mudflap exposing tire tread at the Sharon detail.**



- **9/8 Inspector discovered an audible air leak above a rear axle on a trailer. The leak was at a proper fitting and not part of the air brake system. It was contained within the tire inflation system and the CMV was able to pass an air drop test.**



- **9/8 Inspector discovered a trailer with several audible air leaks at proper fittings. Two of four rear air canisters were leaking at their respective proper fittings. The CMV was able to maintain air pressure and was not placed out of service.**



- **9/8 Inspector discovered an air leak at the Sharon detail. The audible leak was found to be at the emergency glad hand. The driver was able to replace the rubber seal on site and fixed the leak before leaving the detail.**



- **9/8 Inspector discovered chaffed air lines at the Sharon detail. The chaffing did not extend into the reinforcement ply.**



- **9/8 Inspector completed a Level 1 inspection on a 3 axle straight truck with a load measuring 14 feet high, in excess of the allowed 13'6" limit; no over-dimension permit was obtained. In addition to the height violation, a 4" cargo strap was found to be worn. The carrier was required to obtain a single trip permit prior to leaving the detail.**
- **9/10 Inspector completed an inspection on VT Rte 107 in Bethel and discovered the carrier was operating and under a federal out of service order. An inspection was conducted and the vehicle was placed out of service.**

- **9/10 Inspector discovered a CDL required CMV while working on VT Rte 107 in Bethel. The CMV's agriculture registration had expired in 2019 and the truck was actively being used in non-agricultural commerce. The vehicle and driver were placed out of service and educated on the use of farm plates, CDL required vehicles and the medical card requirements.**



- **9/10 Inspector discovered a CMV combination with an unregistered trailer.**



- **9/10 Inspector discovered an operator of a CMV was driving a CDL class A required combination with a class D license. The operator was educated on the CDL requirements and placed out of service.**
- **9/10 Inspector found a CMV with improper commodity specific cargo securement during an inspection on VT RT 107 in Bethel. The machine was over 10,000 lbs and secured with only two chains. The vehicle was placed out of service until properly secured.**



- **9/10 Inspector discovered a blown tire during an inspection on VT RT 107 in Bethel. The vehicle was placed out of service.**



- **9/10 Inspector discovered a cracked windshield and a windshield mounted cell phone holder during an inspection on VT Rte 107 in Bethel.**



- **9/10 Inspector discovered a CMV with a brake lining measuring less than ¼” and a cracked loose piece of brake lining due to rust jacking. The CMV was placed out of service.**



- **9/10 Inspector discovered a CMV with a dual set of bald tires. The CMV was placed out of service.**



- **9/10 Inspector discovered a CMV with brakes out of adjustment. The CMV was placed out of service for meeting the 20% brake criteria.**



- **9/10 Inspector discovered a CMV that met the 20% OOS brake criteria. The CMV was found to have several brakes out of adjustment, active oil leaking which contaminated the inner and outer wheel surfaces on the left and right sides of axels 4 and 5. Two of the four rear wheel hubs did not contain a measurable amount of oil due to the leaking. The CMV was placed out of service for multiple violations.**



- **9/10 Inspectors patrolled the Wardsboro area based on a resident who reported speeding commercial motor vehicles on VT Rte 100. No activity was reported.**
- **9/9 All members of the southern unit attended the awards ceremony at the State House in Montpelier.**



New Entrant:

- **Nothing to report.**

Passenger Vehicle:

- **Nothing to report.**