

COMMERCIAL VEHICLE ENFORCEMENT UNIT (8/22-8/28)

Sector Inspectors participated in CVSA Brake Safety Week. During Brake Safety Week, Commercial Motor Vehicle Inspectors emphasize the importance of brake systems by conducting inspections and removing commercial motor vehicles found to have brake-related out-of-service violations from our roadways. At the same time, many motor carriers work to educate their drivers and maintenance service providers on the importance of brake system safety.

Throughout the week, Inspectors will conduct North American Standard Inspections of commercial motor vehicles, focusing on the vehicle's brake systems and components. In addition, inspectors will compile data on brake hoses/tubing, the focus area for this year's Brake Safety Week, to submit to the Commercial Vehicle Safety Alliance (CVSA). CVSA will report its findings later this year.

Jurisdictions devote a week to conducting commercial motor vehicle inspections, identifying brake violations and removing vehicles with out-of-service brake violations because:

- **Brake system and brake adjustment violations accounted for more vehicle violations than any other vehicle violation category, accounting for 38.6% of all vehicle out-of-service conditions, during last year's three-day **International Roadcheck** inspection and enforcement initiative.**
- **"Brake system" was the third most cited vehicle-related factor in fatal commercial motor vehicle and passenger vehicle crashes, according to the Federal Motor Carrier Safety Administration's (FMCSA) latest "Large Truck and Bus Crash Facts" **report**.**
- **Brake-related violations accounted for eight out of the top 20 vehicle violations in 2020, according to FMCSA's **Motor Carrier Management Information System**.**
- **During last year's **Brake Safety Week**, 12% of the 43,565 commercial motor vehicles inspected were placed out of service for brake-related violations.**

The dates for Brake Safety Week are shared in advance to remind motor carriers, drivers and commercial motor vehicle mechanics/technicians to proactively check and service their vehicles to ensure every commercial motor vehicle traveling on our roadways is safe, mechanically fit and compliant. Recent **research has shown that announcing enforcement campaigns ahead of time improves overall compliance better than surprise enforcement campaigns and for longer periods after the event.**

August, the month of CVSA's Brake Safety Week, is also Brake Safety Awareness Month. Law enforcement agencies will work to educate commercial motor vehicle drivers, motor carriers, mechanics, owner-operators and others on the importance of proper brake maintenance, operation and performance through outreach, education and awareness campaigns.

NORTHWEST SECTOR:

Details:

- **8/24 Williston Rest Area, I-89N, 7 Inspectors screened 186 vehicles. They completed 27 inspections which resulted in 33 vehicle and 3 driver violations. Six vehicles and one driver were placed out of service.**
- **8/26 Georgia Rest Area, I-89S, 7 Inspectors, 1 DMV safety auditor & 3 FMCSA agents screened 134 vehicles. They completed 25 inspections which resulted in 25 vehicle and 12 driver violations. Two vehicles and one driver were placed out of service.**

Crashes:

- **8/25 Inspector was dispatched to a crash involving a trash truck and a passenger car in Hardwick. State police dispatch advised there were no injuries however the car sustained front end damage and needed to be towed from the scene. The crash inquiry revealed the driver of the trash truck blocked both lanes of VT Rte. 15 east of the town in a 50 mph zone with the intention of backing into a private driveway. The CMV driver impeded the flow of traffic and a sedan coming around a curve failed to stop in time to avoid colliding with the truck. The truck did not sustain any damage. A violation was noted on the post-crash report for limitations on backing.**



- **8/25 Inspector responded after hours to a tractor trailer crash on VT Rte. 108 in Cambridge. The driver had gone off the road, struck a telephone pole and drove into a ditch. The collision broke the telephone pole in half, bringing lines down across the roadway. The driver was seen climbing out the passenger side window and fleeing on foot. A VSP K9 was able to locate the driver. The driver was arrested by VSP for DUI (0.217% BrAC roadside), LSA, and Negligent Operation. The driver had been actively drinking beer while driving. The truck and trailer were towed. An inspection was conducted, and the driver was placed out of service for a false log and being under the influence of alcohol.**



Notables:

- **8/23 Inspector stopped an interstate tractor trailer for speed on I89 in Colchester. The driver's log showed him off duty all day, although he was traveling to VT to pick up a load. A consent search was conducted, and marijuana was located in the cab. The driver was ticketed and placed out of service for possession of marijuana and a false log.**



- **8/24 Inspector inspected a straight truck at the Williston detail. The inspection revealed the roll off container was improperly secured in the rear. The driver remedied the out of service defect.**



- **8/24 Inspector inspected a tractor trailer at the Williston detail. The driver was placed out of service for 10 hours off duty for a false log.**



- **8/24 Inspector inspected a tractor trailer at the Williston detail. The truck tractor was placed out of service for a leaking wheel seal.**



- **8/24 Inspector inspected a tractor trailer at the Williston detail. The trailer was placed out of service for having no operable brake lamps.**
- **8/25 Inspector stopped this 6-axle log truck for a permit check and portable weigh. The truck was found to weigh 105,900 lbs., 6,900 lbs. in excess of its 99K permit. The inspection also revealed several violations including a leaking outer hub, and a flat tire. The vehicle was placed out of service, and the carrier was ticketed.**



- **8/26 Inspector stopped a tractor trailer for not pulling into the truck safety inspection site set up on I89 in Georgia. An inspection was conducted, and the driver was placed out of service for not having his previous 7 days of logs as required.**



- **8/26 Inspector inspected a tractor trailer at the Georgia detail. The inspection revealed two out of ten service brakes were defective on the combination and multiple U-bolts were loose on the front axle of the truck tractor. The vehicles were placed out of service for repair.**



- **8/27 Inspector stopped a straight truck operating on I89 in Middlesex for a load securement violation. An inspection was conducted, and the driver secured a pallet of stone weighing more than 3000lbs with one strap and the load was not blocked against forward movement. The driver remedied the out of service defect.**



- **8/27 Inspector inspected a tractor trailer on VT Rte. 22a in Orwell. The truck tractor was placed out of service for a flat tire.**



- **8/27 Inspector stopped an interstate tractor trailer at Exit 12 on I89. The load had shifted in transit, causing the vehicle to be oversized. The driver was unable to move the cargo, but tightened the straps to prevent further shifting. An inspection was conducted at the destination, where the cargo was offloaded.**



- **8/27 Inspector inspected a tractor trailer on VT Rte. 22a in Orwell. The trailer was placed out of service as the passenger side underride guard rubber flap had broken off and was dragging on the highway. Several rivets had already popped out indicating more were to follow causing the flap to fall onto the highway.**



Passenger Vehicle:

- **Nothing to report.**

NORTHEAST SECTOR:

Details:

- **8/24 Lyndonville, I-91 S. Four Inspectors and an auditor screened 138 vehicles. Twelve Level 1, eight Level 2, and three Level 3 inspections were completed. Forty-six vehicle (eight out of service) and three driver violations were discovered.**
- **8/26 Waterford Welcome Center, I-93 N. Four Inspectors screened 125 vehicles. Seven Level 1, five Level 2, and three Level 3 inspections were completed. Seventeen vehicle (two out of service) and one driver violations were discovered.**

Crashes:

- **None reported.**

Notables:

- **8/23 Derby Line POE. An Inspector conducting a level 1 inspection found a damaged air hose which met the OOS criteria. The truck was placed OOS and was repaired at the inspection site.**
- **8/24 Lyndonville detail. An Inspector conducting a level 1 inspection found loose U bolts which were securing the leaf springs on a steer axle and an OOS air hose. The truck was placed OOS and the repairs were made at the inspection site.**



- **8/24 Lyndonville detail. An Inspector conducting a level 1 inspection found inner belt material showing on a dual set tire, the violation was noted and the vehicle was placed OOS for being over the 20% criteria for brakes out of adjustment.**



- **8/24 Lyndonville detail. An Inspector conducting a level 1 inspection placed a CMV out of service for more than 20% of its brakes being out of adjustment as well as inoperable brake lamps.**
- **8/24 Lyndonville, I-91 S. An Inspector conducting a Level 2 inspection on a tractor trailer placed the CMV out of service for defective securment devices. The pocket on the side of the trailer that the required chain was attached to was cracked.**



- **8/24 Hartford, I 91 S. An Inspector conducting a Level 3 inspection noted the driver did not possess a valid medical certificate.**



- **8/25 Springfield, I-91 N. An Inspector conducting a Level 2 inspection on a CMV placed the CMV out of service for a defective brake hose.**



- **8/25 Brighton, Vt Rte 114. An inspector conducting a roving patrol in Island Pond conducted a traffic stop on a CMV and placed the vehicle OOS for inoperable brake lamps.**
- **8/25 Newport, Gardner Park. An Inspector attended a community policing event called “BBQ and a Badge”, where municipal, State and Federal law enforcement agencies attended the event and talked with the community. Inspector and K9 took part in a K9 demonstration for the people who attended.**



- **8/26 Waterford detail. An Inspector conducting a level 2 inspection placed a CMV out of service for a flat tire. The tire measured 15PSI and was rated for 120PSI.**
- **8/26 Randolph, I-89N. An Inspector conducting a Level 2 inspection placed the CMV out of service for a defective brake hose.**



New Entrant:

- **Eight carriers contacted regarding audit, document uploads, inactivation, or closeout. Three audits completed. Five inspections completed towards certifications. 32.5 hours.**

Passenger Vehicles:

- **No activity reported.**

SOUTH SECTOR:

Details:

- **8/23 Gilford Inspection Area NB, I 91, 3 Inspectors screened 102 vehicles. They completed 5 inspections, 4- Level 1, 1- Level 3 which resulted in 3 vehicle violations. One vehicle was placed out of service.**
- **8/24 WRJ SB, I 91, 4 Inspectors screened 176 vehicles. They completed 5 inspections, 4- Level 1, 1- Level 2, which resulted in 10 vehicle and 1 driver violations.**
- **8/25 Springfield NB, I 91, 4 Inspectors screened 209 vehicles. They completed 8 inspections, 6- Level 1, 2- Level 2, which resulted in 10 vehicle and 2 driver violations, which resulted in 2 vehicles out of service and 2 drivers out of service.**



- **8/26 Randolph NB, I 91, 5 Inspectors screened 297 vehicles. They completed 10 inspections, 6-Level 1, 4- Level 2 and completed one portable weigh which resulted in 17 vehicle and 5 driver violations. Three vehicles and 2 drivers were placed out of service.**



Crashes:

- **8/24 Inspector responded to VT Rte 100 in Jamaica to assist the Windham County Sheriff's Department with a crash involving a passenger car that**



crossed the centerline and struck a hazmat commercial vehicle. The operator of the passenger car was transported for minor injuries. This crash is still under investigation by the Windham County Sheriff's Department.

Notables:

- **8/23 Inspector discovered a chaffed air line during a level 1 inspection at the Guilford detail.**



- **8/23 Inspector discovered a loose driveshaft yoke that had greater than 1/8 inch of movement with hand pressure during a level 1 inspection at the Guilford detail. The vehicle was placed out of service and repairs were made on site.**



- **8/24 Inspector discovered an oil leak in the power steering system during a level 1 inspection at the WRJ SB detail. The vehicle also had 1 brake out of adjustment but neither violation meet the out of service criteria. The defects were noted on the inspection report and the vehicle continued the trip.**



- **8/25 Inspector completed a level 1 inspection at the Springfield detail and discovered a CMV with chaffed air lines under a trailer. The damage did not extend into the reinforcement ply.**



- **8/25 Inspector completed a level 1 inspection at the Springfield detail and discovered two axles with outer wheel seal leaks on a CMV. The trailer was placed out of service until the repairs could be made.**



- **8/25 Inspector completed a level 1 inspection at the Springfield detail and discovered a worn tire with ply exposed. This was a single tire in a dual set, it did not meet the OOS criteria but was documented as a violation.**



- **8/25 Inspector completed a level 1 inspection at the Springfield detail and discovered a chaffed service air line and chaffed, exposed wiring. During the inspection the air line ruptured and the truck was placed out of service for multiple equipment violations.**



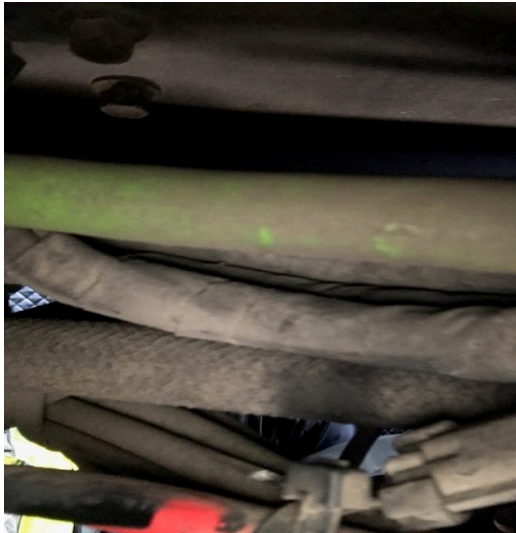
- **8/26 Inspector completed a level 1 inspection at the Randolph detail and discovered a Class A required CMV. The driver is new to the industry and was educated on several FMCSA regulations. The driver was operating a truck/trailer combination on a CDL permit without a licensed CDL holder. The operator was put out of service for several ELD violations and no CDL.**



- **8/26 Inspector completed a level 1 inspection at the Randolph detail and discovered a CMV with horizontal movement between the upper and lower fifth wheel halves. The CMV was placed out of service for the measurement exceeding the OOS criteria of 1/2 inch.**



- **8/26 Inspector conducted a Level 1 inspection on a CMV at the Randolph detail. The CMV was driven into the detail and the operator advised he was utilizing “personal conveyance.” The CMV was fully loaded and heading to its destination in Swanton, VT. The receiver was called, they advised the load was expected at 10 am. The driver was put out of service for misuse of personal conveyance and actively concealing hours. The tractor trailer was put out of service for an audible air leak under the cab. Inspectors discovered a chaffed and leaking air line. The damaged area had been previously concealed with tape which did not repair the leak. The trailer was put out of service for a large frame crack above the suspension of axle 4. The crack extended completely across the lower flange and continued up the frame.**





- **8/26 Inspector completed a level 1 inspection at the Randolph detail and discovered an active oil leak on the outer wheel hub. The leak did not meet the OOS criteria because it had not yet contaminated the wheel surface.**



- **8/26 Inspector completed a level 1 inspection at the Randolph detail and discovered a CMV with 1 missing wheel fastener and 4 adjacent loose wheel fasteners in a 10-fastener grouping. The CMV was placed out of service.**



New Entrant:

- **Nothing to report.**

Passenger Vehicle:

- **Nothing to report.**