

COMMERCIAL VEHICLE ENFORCEMENT UNIT (7/25-7/31)

NORTHWEST SECTOR:

Details:

- **7/27 Georgia SB Rest Area, I-89, 5 Inspectors & 1 VSP Trooper screened 102 vehicles. They completed 19 inspections which resulted in 29 vehicle and 3 driver violations. Five vehicles and one driver were placed out of service.**
- **7/29 Highgate Springs POE, I-89, 2 Inspectors screened 70 vehicles. They completed 9 inspections which resulted in 4 vehicle and 1 driver violation. One driver was placed out of service.**
- **7/29 Clarendon, US Rte 7, 3 Inspectors screened 64 vehicles. They completed 8 inspections which resulted in 6 vehicle and 1 driver violation.**

Crashes:

- **7/29 Inspectors assisted VT State Police with a crash involving a tractor trailer. A passenger car merging onto I89 at the exit 14 interchange struck the front of the tractor trailer. An inspection was conducted; however, the crash was minor and did not meet post-crash protocol.**



Notables:

- **7/27 Inspector conducted a tractor trailer inspection at the I89 Georgia south bound rest area. The tractor was placed out of service for a flat tire.**



- **7/27 Inspector inspected a tractor trailer at the Georgia SB detail. The inspection revealed a tire was flat on the tractor and the driver was unable to present his previous 7 days of logs. Both the vehicle and the driver were placed out of service.**



- **7/27 Inspector conducted a tractor trailer inspection at the I89 Georgia SB detail. The trailer was placed out of service as there were no operable brake lamps.**



- **7/28 Inspector stopped a log truck on VT Route 22a in Orwell for speeding. An inspection was conducted, and the trailer was placed out of service for a deflated air suspension bag and for cargo not secured and resting on tires.**



Passenger Carrier:

- **Nothing to report**

NORTHEAST SECTOR:

Details:

- **7/27 Randolph Rest Area, I-89. Inspectors screened 110 CMVs. Ten inspections (4 Level 1, 3 Level 2 and 3 Level 3) were completed. Seven vehicle violations (two out of service) were discovered.**

Crashes:

- **7/27 Inspector responded to a tractor trailer vs. passenger vehicle crash on I-89 NB MM57. The passenger vehicle operator fell asleep while driving, drove across the median into oncoming traffic and struck the trailer. A level 2 post-crash inspection was conducted on scene. Several vehicle violations (2 out of service) were a result of the crash.**



Notables:

- **7/28 Inspector stopped several tractor trailer operators for speeding within the 55 mph zone on I-91 SB in White River Junction.**



- **7/27 Inspector & K9 Annie assisted the US Postal Service with a drug investigation and detected approximately 1031 grams of marijuana that was inside a mail package.**



- **7/27 Inspector located multiple out of service items while conducting inspections at the I-89 SB Georgia Rest Area detail.**
- **Chaffed air hoses**



- **Fuel leak on reefer unit**



New Entrant:

- **One Safety Audit was completed and documents are being review for 10 additional audits.**

Passenger Vehicle:

- **Nothing to report.**

SOUTH SECTOR:

Details:

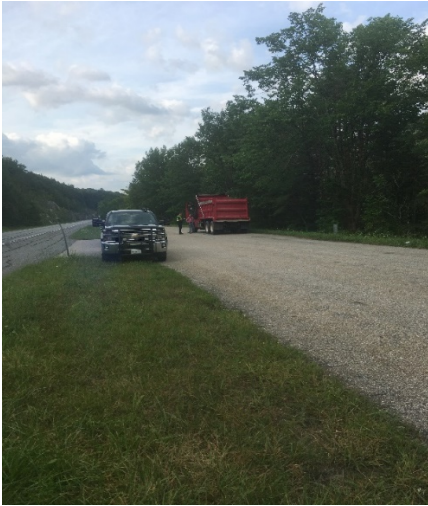
- **7/26 Bethel, VT Rte 107, 3 Inspectors screened 58 vehicles. They completed 8 inspections resulting in 7 vehicle violations and one driver violation.**



- **7/27 Cavendish, VT Rte 103, Inspectors screened 67 vehicles. They completed 11 inspections resulting in 23 vehicle violations and 2 driver violations. The**

inspectors found a total of twenty-three vehicle violations and two driver violations. Three vehicles were placed out-of-service.

- **7/29 Dorset, US Rte 7S, 3 Inspectors completed 10 inspections resulting in 6 vehicle violations. One tractor trailer was placed out-of-service for having 4 of 6 brakes out of adjustment and exceeding the allowable tire weight limit.**



Crashes:

- **Nothing to report.**

Notables:

- **7/26 Inspector found a loose wheel fastener during a level 2 inspection on a tractor trailer. The violation was shown to the driver who repaired it prior to leaving the detail.**



- **7/27 Inspector located a defective tiedown during an inspection on VT Rte 103 in Chester. The driver replaced the strap and continued the trip.**



- **7/27 Inspector discovered cracks in the frame rail of a trailer during an inspection on VT Rte 103 in Chester.**



- **7/27 Inspector discovered loose upper coupler mounting bolts on a fifth wheel assembly during an inspection on VT Rte 103. Due to the loose bolts, an aluminum spacer between the trailer frame and upper fifth wheel plate had shifted out of position. Repairs were made on site and the vehicle continued the trip.**



- **7/27 Inspector found 2 of the 6 tires on an oversize load/modular home to have less than the required amount of tread during inspection. The CMV was in violation of its issued permit length of 86 feet. The actual measurement from the front to the rear was 88 feet. The permit unit was notified.**



- **7/29 Inspector located this defective tire during an inspection on US Rte 7 at the Emerald Lake Pull Off detail. The tire was part of a dual set so it did not meet the out of service criteria and was documented on the inspection report as a violation only.**



- **7/29 Inspector weighed and inspected a CMV hauling water at the Emerald Lake detail. The vehicle was found to be 7,000 lbs over allowable gross weight, had a broken spring, and four of the six brakes were out of adjustment. The vehicle was placed out of service and towed for repairs.**



- **7/30 Inspector assisted AOT and Town Highway crews with culvert and road washouts in the Town of Londonderry, Jamaica, Wardsboro and Athens from the previous night's rainfall. Numerous crews reporting over 4 inches of rain in just a matter of a few hours.**



New Entrant Safety Audit:

- **One Safety Audit was initiated.**

Passenger Vehicle:

- **Nothing to report.**