

COMMERCIAL VEHICLE ENFORCEMENT UNIT (6/28-7/4)

NORTHWEST SECTOR:

Details:

- **6/30 Fair Haven Scale House, US Rte 4, 8 Inspectors screened 283 vehicles. They completed 23 inspections which resulted in 51 vehicle and 8 driver violations. Sixteen vehicles and two drivers were placed out of service.**



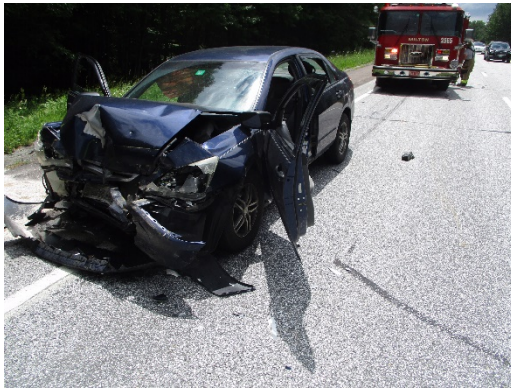
- **7/2 Ferrisburgh, US Rte 7, 4 Inspectors screened 119 vehicles. They completed 12 inspections which resulted in 31 vehicle and 8 driver violations. Four vehicles were placed out of service.**





Crashes:

- **6/30 Inspector responded to an injury crash involving a passenger vehicle and a truck tractor intermodal on I89 in Milton. It was determined that the passenger vehicle ran into the rear of the intermodal unit while the CMV traveled northbound on the interstate. A level 1 post-crash inspection was complete. VSP-Williston seized the passenger vehicle suspecting drugged driving involvement.**



- **7/1 Inspector responded to a disabling damage crash involving a tractor trailer and a passenger vehicle on VT Rte 100 in Eden. It was determined that the passenger vehicle pulled out of a side road in front of the oncoming southbound CMV. A level 2 Post-Crash inspection was done and the CMV placed out of service for damage incurred from the crash.**



- **7/1 Inspector responded to a tractor trailer and pick-up truck crash on US Rte 7 in Charlotte. The tractor trailer driver advised he fell asleep and rolled his CMV over. The pick-up truck collided with it. Minor injuries were sustained to the occupants of the pick-up truck. The CMV driver was uninjured. The CMV driver was ticketed by the Vermont State Police for failure to maintain lane.**





- **7/1 Inspector responded to a tractor trailer crash on VT Rte 22A in West Haven. The tractor trailer loaded with general freight headed north left the roadway and became stuck in a wet area. During the recovery, the upper rail collapsed on the trailer, causing the entire frame to buckle. During continued recovery efforts, a second tractor trailer traveling south, loaded with protein powder, left the opposite side of the roadway and overturned into a power pole. Post-crash inspections were completed on both vehicles. Tickets were issued.**





Notables:

- **6/29 Inspector stopped a truck towing a vehicle trailer for speeding on VT Rte 22a in Shoreham. An inspection was conducted and the trailer was placed out of service for an exposed hub.**





- **6/30 Inspector inspected a truck towing a trailer at the Fair Haven detail. The driver was placed out of service for 10 hours as he had no log for the previous 7 days.**



- **6/30 Inspector inspected an interstate tractor trailer at the Fair Haven detail. The driver had spent the past week driving from AL to VT and his log showed no driving time. The driver was placed out of service for a false log.**



- **6/30 Inspector inspected an interstate car hauler at the Fair Haven detail. The vehicle was placed out of service for an inoperable parking brake.**



- **6/30 Inspector inspected an interstate RV hauler at the Fair Haven detail. The vehicle was placed out of service for an inoperable parking brake.**



- **7/1 Inspector observed an oversized load stopped on the Interstate in Waterbury. The driver had stopped to remove large tree branches that had**

broken off onto the load. An inspection was conducted and the trailer was placed out of service for an inoperable turn signal. The driver was able to repair the signal.



- 7/1 Inspector stopped a straight truck for a driver violation operating on I89 through Georgia, VT. A subsequent inspection revealed a load securement violation as the rear of the roll off container was not secured. Two tires on the truck were severely deflated. The truck was placed out of service for the noted violations. The driver was ticketed for not wearing his seat belt and the carrier was issued a ticket.



- 7/2 Inspector while working at the Ferrisburgh detail stopped an oversize load traveling south past the detail. This load was not properly secured, not properly

permitted, and was found to be 19,000 lbs. over its registered weight. Forced registration and permit fees were collected and fines issued for violations. Additionally, the truck was placed out of service for equipment violations.

- 7/2 Inspector inspected a tractor trailer at the Ferrisburgh detail. The CMV was placed out of service for 20% defective brakes and an air hose that was cut open and leaking air.

Passenger Carrier:

- Nothing to report

NORTHEAST SECTOR:

Details:

- 6/30 Waterford Welcome Center, I-93, 3 Inspectors screened 120 vehicles. Fifteen inspections (one Level 1 hazardous materials) were completed. Seven vehicle and one driver (one out of service) violations were discovered.
- 7/2 Ryegate AOT, US Rte 302, covert detail using spotter focusing on prohibited cell phone use, failure to wear seat belt, and operating authority. Eight inspections were conducted. Twenty-five vehicle violations (three out of service) and six driver violations were discovered.

Crashes:

- None reported.

Notables:

- 6/29-7/2 Inspector and K9 Annie attended canine urban tracking training at the Vermont Police Academy.



- **7/2 Inspector stopped a tractor trailer operator for bypassing a truck safety inspection checkpoint at the Waterford Welcome Center. A level 3 inspection was conducted.**



- **7/2 Inspector received a tip from another CMV driver that a CMV had pulled over onto the side of the interstate prior to the detail area. The Inspector went and made contact with the CMV driver who pulled into the detail area for inspection. After presenting what was possibly the worst attempt at a story to the Inspector, the driver was placed out of service and ticketed for a false log and was issued a ticket for stopping on the interstate. The story, that the Whitefield NH based shipper had provided a driver for the CMV and he had subsequently gotten out of the stopped CMV while pulled over on the interstate prior to the detail, was proven to be a lie when the shipper was contacted.**
- **7/2 CMV driver was observed operating without a seatbelt at the Ryegate detail. An inspection was completed and the driver was issued a ticket,**

- **7/2 Vermont based landscaping company was coming from NH without proper markings. An inspection was completed at the Ryegate detail. The company was not registered with US DOT. No operating authority was needed as they were a private property motor carrier. Guidance was provided to the carrier for US DOT registration.**
- **7/3 Inspector identified an out of service air hose while conducting a level 2 inspection at the WRJ NB rest area.**



New Entrant:

- **Three carriers contacted regarding scheduling, document submission, inactivation, close out. One audit completed and uploaded. 6 Hours.**

Passenger Vehicles:

- **No activity reported.**

SOUTH SECTOR:

Details:

- **6/30 South Sector Inspectors joined the NW Unit at a detail in Waterford.**
- **7/1 WRJ, I-91N, 4 Inspectors screened 359 trucks. They completed 9 level 1 inspections and 3 level 2 inspection resulting in 1 driver and 8 vehicle violations. Three vehicles were placed out of service.**
- **7/2 South Sector Inspectors joined the NE Sector at a detail in Ryegate.**

Crashes:

- **None reported.**

Notables:

- **6/29 Inspector stopped a tractor trailer on US Rte 7 in Rutland City after the driver was observed talking on a cell phone which she was holding in front of her face. An inspection was completed.**
- **6/30 Inspector conducted a directed patrol on I 91 NB in the area of MM65. Three inspections were completed. Two permits were checked.**



- **7/2 Inspector conducted a level 1 inspection on a 4 axle dump truck at the Newbury AOT garage. The vehicle had brakes out of adjustment, 1 inoperable**

brake, fuel leak, exhaust leak and the driver's NH CDL had been downgraded due to an expired medical certificate. The vehicle was placed out of service and the driver was provided instruction on how to get the licensing issue resolved.



- **7/2 Inspector assisted Brattleboro PD with an active fight on Putney Road in Brattleboro.**

Safety Audits:

- **6/28-7/04 Inspectors closed out an audit, made contact with several companies by phone and initiated 2 offsite new entrant audits.**

Passenger Carrier:

- **None reported.**