

COMMERICAL VEHICLE ENFORCEMENT UNIT (5/8-5/14)

NORTHWEST SECTOR:

Details:

- 5/10 Colchester NB, I-89, 5 Inspectors screened 317 vehicles. They completed 24 inspections which resulted in 28 vehicle and 3 driver violations. Seven vehicles and one driver were placed out of service.
- 5/12 Clarendon NB, US Rte 7, 3 Inspectors screened 88 vehicles. They completed 8 inspections which resulted in 8 vehicle violations. One vehicle was placed out of service. The detail opening was delayed due to having to move from the scheduled Ira WB site, which was blocked with parked trucks upon arrival.
- 5/12 Ferrisburgh NB, US Rte 7, 3 Inspectors screened 138 vehicles. They completed 9 inspections which resulted in 23 vehicle violations. Five vehicles were placed out of service.

Crashes:

- 5/9 Inspector responded to a tractor trailer rollover on VT Rte. 78 in Swanton. Upon arrival, responding Troopers relayed that the CMV driver said a westbound vehicle came into his lane and to avoid a head on collision the driver moved as far right as he could and caught the soft shoulder. The CMV rolled over. The driver was transported to the hospital with minor injuries and the truck and chip trailer were totaled. A level 1 post-crash inspection was conducted and both the truck tractor and trailer were placed out of service due to defects sustained in the crash. The crash investigation is ongoing, and Troopers are attempting to identify the vehicle potentially responsible for the causation of the collision.



Notables:

- 5/9 Inspector stopped an intrastate truck and trailer for an expired inspection in Colchester. This was a Class A combination and the driver had a Class B CDL. The

driver was placed out of service for improper license and no medical card. The trailer was placed out of service for an improper breakaway connection.



- 5/10 Inspector inspected an interstate box truck at the Colchester detail. The truck was placed out of service for a defective parking brake. The driver was placed out of service for a false log. His log showed no driving time for the day of the inspection and said the driver was in the sleeper berth in Ohio. This vehicle has no sleeper berth.



- 5/10 Inspector inspected an intrastate truck and trailer at the Colchester detail. The trailer was placed out of service as the load of machinery was missing 2 required chains.



- 5/10 Inspector inspected a tractor trailer at the Colchester detail. The trailer was placed out of service as the spare tire under the trailer was not secured in it's mount.



- 5/10 Inspector inspected a tractor trailer at the Colchester detail. The truck tractor was placed out of service as the axle 1 driver's side wheel seal was leaking and contaminating the brake friction surface.



- 5/10 Inspector inspected a tractor trailer at the Colchester detail. The trailer was placed out of service as the drain valve cable on the air reservoir tank was broken between axles 4 and 5 was dragging on the ground and in between the tires.



- 5/11 Inspector inspected a truck in Shoreham. The driver was placed out of service for not having a CDL in a CDL required combination. The combination was grounded for not having IFTA. The truck was placed out of service as the parking brake was inoperable.



- 5/11 Inspector inspected a tractor trailer in Shoreham. The truck tractor was placed out of service for a flat tire.



- 5/11 Inspector stopped a box truck on I89 in Colchester for failing to display a USDOT number. The vehicle was placed out of service as the carrier's USDOT number was found to be inactive.



- 5/11 Inspector stopped an intrastate truck for an inoperable headlamp in Colchester. The vehicle was found to be an oversize load operating without the required signs and flags. The vehicle was also placed out of service for failing to have a flag on a beam that projected 8 ft. off the back of the truck.



- 5/11 Inspector assisted the US Marshals Service as they pursued and arrested someone driving a stolen vehicle in Waterbury.
- 5/11 Inspector stopped this 6 axle log truck traveling west on US Rte. 4 in Fair Haven for a suspected overweight violation. The truck was taken to the Fair Haven Scale House where a platform weigh found the vehicle to be 110,860 lbs., 11,860 lbs. over the 99K permit. The carrier was issued a ticket for the violation.



- 5/12 Inspector inspected a tractor trailer in Shoreham. The trailer was placed out of service as the axle 5 passenger side outer dual was leaking air from a hole in the tread.



- 5/12 Inspector inspected an interstate tractor trailer at the Ferrisburgh detail. As the CMV pulled into the detail the rear wheels on the tractor were actively smoking. A Level 1 inspection was conducted and the combination was placed out of service for inoperable brakes.



- 5/12 Inspector inspected an interstate tractor trailer at the Ferrisburgh detail. The vehicle was placed out of service as there were no working brake lights.



- 5/12 Inspector inspected an intrastate truck and trailer hauling machinery at the Ferrisburgh detail. A loose chain was located on the trailer deck. The trailer was placed out of service until the chain was secured.



- 5/12 Inspector inspected a dump truck at the Clarendon detail. The inspection revealed the low air pressure warning device was inoperative on the truck. The dump truck was placed out of service for the defect.



- 5/13 Inspector stopped a tank truck for an equipment violation operating on I89 in St. Albans. A subsequent inspection revealed the driver did not have a medical card and self-certified as excepted interstate. The driver was placed out of service for the violation.

Passenger Carrier:

- Nothing to report.

NORTHEAST SECTOR:

Details:

- 5/10 Coventry Rest Area, I-91S, 3 Inspectors screened 136 vehicles. Sixteen inspections were completed. Twenty-four vehicle (four out of service) and four driver (one out of service) violations were discovered.
- 5/12 Welcome Center, I-93N, 4 Inspectors screened 124 vehicles. Eleven inspections were completed. Thirty-six vehicle (four out of service) and seven driver (one out of service) violations were discovered.

Crashes:

- None reported.

Notables:

- 5/10 Coventry detail. An Inspector conducting a Level 1 inspection discovered a crack in a repair weld on a suspension related component. The CMV was placed out of service.



- 5/10 Coventry detail. Inspectors conducting Level 1 inspections discovered numerous air brake hoses which met the out of service criteria:



- 5/10 Coventry detail, I-91S. An Inspector conducting a Level 1 inspection placed the CMV out of service for improper load securement.



- 5/10 Coventry detail, I-91S. An Inspector stopped a CMV that failed to pull in for inspection. A Level 2 inspection was completed. The driver was placed out of service for not possessing a Class A CDL when required. The CMV was placed out of service for improper load securement. A portable weigh was conducted and revealed the CMV was 14,000 lbs over its registered weight. The trailer was parked until a lighter tow vehicle arrived. The Inspector showed the driver how to properly secure the piece of equipment. In lieu of a ticket for the weight violation, the Inspector provided guidance on increasing the registered weight of the tow vehicle and advised the driver to increase the registered weight, which the driver did and was verified by the Inspector.



- 5/12 Waterford detail, I-93N. An Inspector conducted a Level 2 on a CMV and placed the driver out of service for not having corrective lenses as required by the medical certificate.
- 5/12 Waterford detail, I-93N. An Inspector stopped a CMV for failing to stop for inspection. The CMV was not properly marked and was placed out of service for an inoperable emergency brake. The driver was noted a violation for not being medically certified to drive in interstate commerce.
- 5/12 Waterford detail, I-93N. An Inspector conducted a Level 2 inspection on an empty two axle CMV. The CMV was not properly marked and the driver was not current on his hours of service. After interviewing the driver, the Inspector determined that the driver, who was primarily a local driver, qualified to use paper logs. The Inspector printed out blank copies so the driver could get current and not be placed out of service.



- 5/12 Waterford detail, I-93N. An Inspector conducting a Level 1 inspection on a six axle tractor trailer combination discovered numerous cracks between the frame and the frame rails/ suspension support components. The CMV was placed out of service.



- 5/13 US Rte 5 Coventry. An Inspector stopped an over dimension vehicle towing a boat in excess of 8'6" wide without warning signs or flags. The vehicle did not have a permit to operate over dimension. The vehicle was grounded and information on how to secure a permit was given to the operator.



- 5/13 Inspector stopped a 6 axle log truck loaded with pine logs on US Rte 5 in Fairlee. The truck was weighed with portable scales and a ticket was issued for weighing 110,000 lbs with a legal permitted weight of 99,000 lbs.



New Entrant:

- Eight carriers contacted regarding audit, document uploads, inactivation, or closeout. Five audits completed. 27 hours.

Passenger Vehicles:

- No activity reported.

SOUTH SECTOR:

Details:

- 5/10 Emerald Lake, Dorset, US Rte 7S, 4 Inspectors screened 40 vehicles. They completed 4 Level 1, 6 Level 2, and 1 Level 3 inspections resulting in 17 vehicle and 2 driver violations. Two vehicles and 1 driver were placed OOS. Additionally, 10 platform weights were verified and 12 OS/OW permits checked for compliance.
- 5/12 Springfield, I-91N, 5 Inspectors screened 239 vehicles. They completed 7 Level 1, 6 Level 2, and 1 Level 3 inspections resulting in 18 vehicle violations and 5 driver violations. Eight vehicles and 2 drivers were placed OOS. Additionally, 3 OS/OW permits were checked, and 6 platform weighs verified.



Crashes:

- 5/12 Inspector responded to a report of a single tractor trailer that had rolled over at the top of Hogback on VT Rte 9 in the Town of Marlboro. During this inspection it was found that above mentioned CMV was traveling east on VT Rte 9 when the driver stated he felt his load shift in the rear of the trailer. The tractor trailer rolled over onto the south side shoulder of VT Rte 9. The CMV sustained major damage to the passenger side of the vehicle. A Level 1 inspection was completed on the CMV and load. The truck was loaded with three 15,000 lbs drill casting heads at the time of the rollover. The CMV was up righted and towed by a heavy-duty wrecker. There were no injuries.





Notables:

- 5/10 Inspector located a loose U-joint during a level 1 inspection at the Emerald Lake Detail. The vehicle also had brakes out of adjustment and was placed out of service. Repairs were made on site.



- 5/10 Inspector discovered a defective tiedown during an inspection at the Emerald Lake Detail. The tiedown was knotted and because the load was not blocked or braced a second tiedown was required. The vehicle was placed out of service until the load was properly secured.



- 5/10 Inspector conducted a portable weigh on a CMV combination at the Emerald Lake Detail. The combination was 20,000 lbs. over the allowable weight and the combination also required a CDL which the driver did not have. Additionally, the emergency brake cable on the trailer was not connected to the towed vehicle. The vehicle was placed out of service, and a ticket was issued to the carrier for the weight violation. The combination was separated to gain compliance.



- 5/12 Inspector located a driver that was prohibited from performing safety sensitive functions during an inspection at the Springfield NB detail. The driver was placed out of service.
- 5/12 Inspector located a roll off container not properly secured during an inspection at the Springfield NB detail. The tiedowns at the rear of the container were not attached. The vehicle was placed out of service until the container was properly

secured and the driver, who was new to the industry, was educated on the regulations.



- 5/12 Inspector conducted a level 2 inspection at the Springfield detail and placed a truck out of service for an actively leaking fuel tank.



- 5/12 Inspector located a chaffed air line with the damaged area extending into the inner reinforcement plies during an inspection at the Springfield NB detail. The vehicle was placed out of service and repairs were made on site.

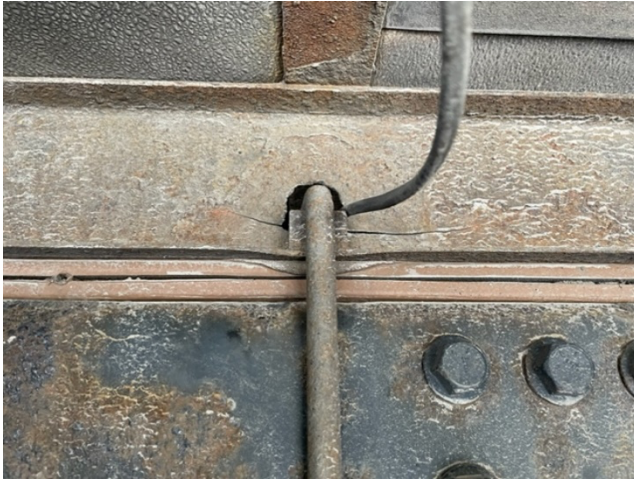


- 5/12 Inspector conducted a portable weigh on a flatbed truck carrying lumber. The GVWR was 27,600 lbs. which required the operator to have a Class B CDL. The truck was registered for 25,999 lbs. and the operator had a Class D License with a medical card. The driver was placed out of service for no CDL.
- 5/12 Inspector discovered a broken bumper mount during a level 2 inspection at the Springfield Detail. The violation did not meet the out of service criteria and was marked as a violation only.



- 5/12 Inspector completed a Level 1 inspection on a 5-axle combination transporting an intermodal container loaded with sports equipment. Multiple air leaks were discovered on the towing vehicle, which failed the air loss rate test; the truck was placed OOS for brakes, as it could not maintain air with the service brake applied.

- 5/10 Inspector located a cracked body rail above a body mount/frame rail while conducting a level 2 inspection at the Emerald Lake detail. This violation did not meet the out of service criteria and was marked as a violation only.



- 5/12 Inspector completed a Level 2 inspection on an oversized load transporting two large sheds. The vehicle combination was found to be 83 feet long with a permitted length of 75 feet. The driver was able to shorten the load to 81 feet. Given the proximity of its destination, the transport was allowed to continue. A ticket was issued for the permit violation and the driver warned to check the load prior to transport to ensure permit requirements were met.
- 5/13 Inspector assisted a disabled motorist on the Winooski River Bridge while conducting an early morning patrol. The truck had a blown tire, yellow 12 (Dec. 2021) inspection sticker, and bald tires. The company that owned the truck was issued a defective equipment ticket for multiple equipment issues.



- 5/13 Inspector assisted a disabled motorist on I 89 SB in Williston while conducting an early morning patrol. The motorist had struck a deer and was trying to figure out how to file a police report. A report was filed, and the case number was given to the operator.



Passenger vehicles:

- Nothing to report