

## COMMERICAL VEHICLE ENFORCEMENT UNIT (4/17-4/23)

### NORTHWEST SECTOR:

#### Details:

- 4/19 Williston SB, I-89, 2 Inspectors screened 186 vehicles. They completed 5 inspections which resulted in 3 vehicle violations. The detail opening was delayed due to winter driving conditions.
- 4/20 Clarendon SB, US Rte 7, 3 Inspectors screened 52 vehicles. They completed 6 inspections which resulted in 3 vehicle and 2 driver violations.
- 4/21 Highgate POE SB, I-89, 2 Inspectors screened 52 vehicles. They completed 7 inspections which resulted in 3 vehicle and 1 driver violations. One driver was placed out of service.
- 4/21 Ira WB, US Rte 4, 3 Inspectors and 1 DMV SI screened 166 vehicles. They completed 14 inspections which resulted in 28 vehicle and 5 driver violations. Two vehicles, and three drivers were placed out of service.

#### Crashes:

- Nothing to report.

#### Notables:

- 4/18 Inspector stopped an intrastate truck and trailer on US Rte. 2 in Alburgh for a lighting violation. The driver was placed out of service for failing to have a medical card.



- 4/18 Inspector stopped a truck hauling a trailer for an equipment violation in Richmond. A subsequent inspection revealed the breakaway device was not properly hooked to the towing vehicle. The trailer was placed out of service and the driver remedied the defect.



- 4/19 Inspector assisted several motorists who slid off I 89 during the Tuesday snowstorm.



- 4/19 Inspector came across a box truck that had gone off the road on VT Route 125 in Hancock while on his way to training. The driver advised he had been there for at least 3 hours and had no cell service. The Insp. offered to give the driver a ride to the nearest gas station where there was cell service but the driver declined and wanted to stay with the truck. As soon as the Insp. got cell service, a call was made to the carrier explaining the plight of the driver and to make arrangements to recover the truck.



- 4/20 Inspector inspected a tractor trailer in Shoreham. The trailer was placed out of service for a flat tire.



- 4/20 Inspector inspected a tractor trailer in Shoreham. The truck tractor was placed out of service for a flat tire.



- 4/20 Inspector inspected a tow truck in Orwell that was en route to Maryland. The truck was placed out of service as the carrier's US DOT number was inactive.



- 4/20 Inspector stopped a tractor trailer hauling wood chips for a suspected overweight infraction in Alburgh. The subsequent portable weigh and inspection revealed the CMV was 9000 pounds over its permitted 99000-pound limit. Additionally, a tire was severely deflated on the trailer and the vehicle was placed out of service. An overweight ticket was issued to the carrier.





- 4/21 Inspector conducted an inspection on this combination at the Ira detail. The combination was found to require a class A CDL, and the operator had a class D license. The truck had an inoperative parking brake, and the brake lights on the towed unit were also inoperative. The driver, truck and trailer were placed out of service.



- 4/21 Inspector inspected a tractor trailer that entered the Ira detail that was not displaying a carrier name, USDOT number, or a 2022 IFTA decal. A level I inspection was conducted. Other defects and violations discovered include no annual inspection, brakes out of adjustment, a brake chamber loose on its mounting, load not properly secured, and the trailer was in excess of 53 ft. in length. The driver holds an air brake-restricted CDL. Several of the violations had been previously cited during an inspection conducted in Florida in March. The driver and vehicle were declared out of service.



- 4/21 Inspector inspected a box truck at the Ira detail. The inspection revealed the driver was not utilizing an ELD when one is required. The driver had been previously cited for the same infraction in TN. The driver was placed out of service for 10 hours.



- 4/21 Inspector inspected an interstate tractor trailer at the Highgate detail. The driver failed to get enough hours off overnight and had no hours available to drive in the United States. The driver was placed out of service.



Passenger Carrier:

- Nothing to report.

NORTHEAST SECTOR:

Details:

- 4/21 Randolph Rest Area, I 89 North. Four Inspectors screened 280 vehicles. Twenty-eight inspections were completed. Twenty-three vehicle (six out of service) and seven driver violations were discovered.



Crashes:

- 4/19 Lyndonville, I 91 S. Inspector responded to assist VSP- St Johnsbury at a reportable CMV crash. The CMV, a five-axle tractor trailer transporting garbage, struck an ambulance that was exiting a separate crash scene. No injuries were reported. A Level 1 inspection was completed.



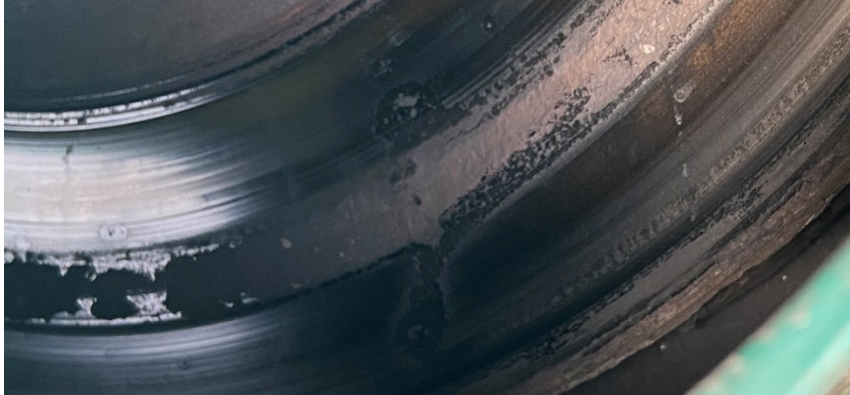
Notables:

- 4/18 Stowe, VT Rte 100. An Inspector conducting a Level 1 inspection placed the CMV out of service for a defective brake hose. The air brake hose was leaking by the brake chamber not at a proper connection.
- 4/19 Morgan. Inspectors responded to Seymour Lake for a report of two individuals in distress who had fallen into the lake. Upon arrival, the Inspectors located the males who were in the partially frozen body of water. Both individuals succumbed to the conditions and were recovered by the Vermont State Police dive team several hours later.
- 4/20 Orleans County Sheriff's Department. Inspectors provided a block of instruction to the department on CDL, CMV awareness, and DMV response to post-crash incidents.
- 4/20 Groton, US Rte 302. An Inspector conducting roving patrol came across loose livestock on and about the roadway. The Inspector located the owner nearby and the animals were returned to their enclosure. There were no crashes involving the animals.





- 4/21 Randolph detail. An Inspector placed a CMV out of service for an inoperable emergency brake.
- 4/21 Randolph detail. An Inspector placed a CMV out of service for defective brakes. The brake rotors on axle #1 left and right sides had severe rust on the friction area.



- 4/21 Warrens Gore, VT Rte 114. An Inspector responded to a disabled CMV. The CMV had lost its left front tire. A Level 2 inspection was completed and the CMV was placed out of service.



- 4/21 Randolph detail. An Inspector conducting a Level 2 inspection on a four-axle CMV placed the CMV out of service in combination for defective emergency braking on the trailer.



- 4/21 Randolph detail. An Inspector conducting a Level 2 inspection placed the CMV out of service for inoperable turn signals and stop lamps at the rear of the vehicle.



- 4/21 Randolph detail. After receiving reports about a CMV stopped roadside prior to the detail when the driver pulled into the detail area a Level III inspection was completed. After the inspection was completed a ticket was issued to the driver for stopping on the interstate. The driver advised that he had stopped for a virtual job interview.
- 4/22 Coventry, I 91 N. An Inspector conducting stationary patrol on the interstate stopped CMV after observing the operator with a cell phone in his hand. A Level 3 inspection was completed and the driver was issued a ticket for the offense.



#### New Entrant:

- Three carriers contacted regarding audit, document uploads, inactivation, or closeout. Three audits completed. Ten inspections completed towards annual certification. 24 hours.

#### Passenger Vehicles:

- No activity reported.

#### SOUTH SECTOR:

##### Details:

- 4/19 US Rte. 4 Bridgewater, 3 Inspectors screened 23 vehicles. They completed 7 Level 2 inspections, resulting in 4 vehicle and 1 driver violation. No drivers or vehicles were placed out of service. The detail opening was delayed due road conditions and crash response that morning.





- 4/20 Vt Rte. 9 Searsburg, 2 Inspectors screened 15 vehicles. They completed 6 inspections resulting in 1 driver violation. No out of service violations discovered.
- 4/21 VT Rte. 107 Bethel, 3 Inspectors screened 39 vehicles. They completed 14 inspections resulting in 14 vehicle violations and 5 driver violations. Three vehicles and 1 driver were placed out of service. One oversized permit was checked.



#### Crashes:

- 4/19 Inspectors responded to a crash on I89 N in the Town of Bethel involving a CMV. It was snowing at the time of the crash and the road was covered with several inches of slushy snow. The driver lost control, slid into the median, then overturned. A heavy-duty wrecker recovered the vehicle, and a post-crash inspection was completed with no preexisting defects found.



#### Notables:

- 4/21 Inspector discovered a broken axle positioning component during an inspection at the VT Rte. 107 Detail. The vehicle was placed out of service.





- 4/21 Inspector located a defective brake lining on the steering axle of a tractor trailer combination during an inspection on VT Rte 107. The condition did not meet the out of service criteria and the vehicle was placed out of service.



- 4/21 Inspector located three tires on a tractor trailer combination that were so worn multiple plies were exposed in the tread area. One of the wheels had all 5-wheel fasteners loose and the driver had no record of duty status. The truck, trailer, and driver were all placed out of service. Repairs were made onsite.



- 4/21 Inspector completed a level 2 inspection on a 7-axle tractor trailer transporting an oversized quarry dump truck at the VT Rte. 107 Detail. While checking the permit specifications the load was found to be within dimension; however, a tire was found on a drive axle with less than 50% of the maximum inflation pressure (43 lbs. of max 110 psi). Additionally, the truck ABS light was illuminated while the truck was running to indicate a defect with the ABS system. The vehicle was placed OOS for the flat tire, which was inflated roadside allowing the transport to continue.



- 4/21 Inspector completed a level 3 inspection on a 4-axle combination vehicle transporting horses for hire. In reviewing the driver's logbook, violations of the 11- and 14-hour rule were found on three days of the 8 days period; the COVID livestock exemption for hours of service was not applicable based on the



circumstances. The driver was not in violation at the time of the inspection, so the violations were documented, and the vehicle continued to its destination.

- 4/19 Inspector assisted VSP with several side offs while traveling to the Bridgewater detail.



- 4/21 Inspector discovered 3 of 14 loose body mounts on a 2-axle box truck while conducting a level 2 inspection. The condition did not meet the out of service criteria.



- 4/21 Inspector discovered 6 of 14 loose body mounts on a 2-axle box truck while conducting a level 2 inspection at the VT Rte. 107 Detail. The condition did not meet the out of service criteria.



Passenger Carrier:

- Nothing to report.