

## COMMERICAL VEHICLE ENFORCEMENT UNIT (4/10-4/16)

### NORTHWEST SECTOR:

#### Details:

- 4/12 Clarendon NB, US Rte 7, 2 Inspectors, and the VT Dept. of Agriculture screened 77 vehicles. They completed 5 inspections with no violations.
- 4/12 Ferrisburgh NB, US Rte 7, 2 Inspectors screened 75 vehicles. They completed 17 inspections which resulted in 16 vehicle and 2 driver violations. Three vehicles, and one driver were placed out of service.
- 4/12 Cambridge WB, VT Rte 104, 2 Inspectors, and 1 trooper screened 59 vehicles. They completed 6 inspections which resulted in 5 vehicle violations. One vehicle was placed out of service.
- 4/14 Colchester NB, I-89, 5 Inspectors screened 312 vehicles. They completed 17 inspections which resulted in 26 vehicle and 7 driver violations. Seven vehicles, and two drivers were placed out of service.

#### Crashes:

- Nothing to report.

#### Notables:

- 4/11 Inspector completed two total abstinence investigations.
- 4/11 Inspector stopped an intrastate truck and trailer on US Rte. 7 in Shelburne for an expired inspection sticker. The trailer was placed out of service for loose items and an inoperable turn signal.



- 4/11 Inspector stopped a tractor trailer hauling doubles in Williston for a flat tire. An inspection was conducted and one trailer was placed out of service.



- 4/12 Inspector inspected a tractor trailer at the Ferrisburgh detail. The driver was placed out of service as he was prohibited from operating in accordance with the drug and alcohol clearinghouse program.



- 4/12 Inspector inspected a tractor trailer at the Ferrisburgh detail. The CMV was grounded for not having proof of valid IFTA. The carrier was contacted and reported that they couldn't find a valid one. The driver was shown how the carrier could apply for a 72 hour permit.



- 4/12 Inspector stopped a truck for a load securement infraction on the way to the Cambridge detail. An inspection was conducted and the driver remedied the defect by adding a required strap to the pallet of cement blocks.



- 4/12 Inspector placed an interstate explosives hauler out of service at the Ferrisburgh detail as the steer tire contacted the pitman arm.





- 4/12 Inspector inspected an intrastate truck and trailer at the Ferrisburgh detail. The trailer was placed out of service until the machine was properly secured.



- 4/12 Inspector inspected an interstate truck and trailer. The trailer was placed out of service for an inoperable turn signal.
- 4/13 Inspector inspected a box truck in Shoreham. The driver was placed out of service for not wearing corrective lenses as required on his medical certificate. He was also placed out of service for having a restriction on his PA license requiring an interlock device in every vehicle he operates. The truck did not have that device.





- 4/13 Inspector inspected a tractor trailer in Orwell. The trailer was placed out of service for a flat tire.



- 4/13 Inspector inspected a box truck in Orwell. The truck was placed out of service as the parking brake was inoperable.



- 4/14 Inspector inspected a tractor trailer in Shoreham. The driver was placed out of service for 10 hours for having a false log. The driver went off duty in St. Albans, VT and remained off duty for the next 2 days. His next log showed him in Suffern, NY. The driver admitted driving from VT to NY off duty as he needed the money.



- 4/14 Inspector inspected a truck and trailer in Shoreham. The truck had no markings. Through the driver interview, it was found that the driver and vehicle were in interstate commerce and the carrier had no US DOT number and the driver had no medical certificate or logs. Multiple violations were recorded but no tickets issued. Instead the driver was educated in what was required of his company in order to conduct interstate commerce.



- 4/14 Inspector inspected a box truck at the Colchester detail. The inspection revealed the driver did not possess any record of duty status and the truck had an inoperable parking brake. Both the driver and the truck were placed out of service for the violations.



- 4/14 Inspector inspected an interstate tractor trailer at the Colchester detail. The trailer was placed out of service for inoperable brake lamps.



- 4/14 Inspector inspected an interstate tractor trailer at the Colchester detail. The trailer was placed out of service for load securement issues: hydraulic arm not secured, failing to meet minimum aggregate working load limit.





- 4/14 Inspector inspected a tractor trailer at the Colchester detail. The inspection revealed the load was not secured properly as the 2000 lb. pallets require two straps when not braced/blocked by a headerboard or cargo. Additionally, the service glad hand line was frayed through the reinforcement fabric ply. The combination and trailer were placed out of service for the violations.



- 4/15 Inspector inspected a tractor trailer in Shoreham. The truck tractor was placed out of service as the 2 air hoses into the axle 2 passenger side brake chamber were frayed through the ply.



- 4/15 Inspector inspected a tractor trailer in Orwell. The truck tractor was placed out of service as fuel was leaking from the passenger side saddle tank cap. The cap was not properly secured. The trailer was placed out of service for a flat tire.





- 4/15 Inspector stopped this 7 axle log truck traveling west on US Rte. 4 for a suspected overweight violation. The truck was escorted to the Fair Haven Scale House for a platform weigh. The truck was found to be 112,280 lbs., 13,280 lbs. over the 99K permit. Neither the truck or trailer were inspected. The carrier was issued a ticket.



Passenger Carrier:

- Nothing to report.

#### NORTHEAST SECTOR:

Details:

- 4/12 Waterford Welcome Center, I 93 North. One Inspector and on FMCSA Special Agent screened 110 vehicles. Seven inspections were completed. Eight vehicle (two out of service) and two driver violations were discovered.

- 4/13 Coventry Village, US Rte 5. Three Inspectors screened 48 vehicles. Twelve inspections were completed. Seventeen vehicle violations were discovered. Two tickets were issued.
- 4/14 White River Junction, I-91 North. Four inspectors screened 162 vehicles. Fourteen inspections were completed. Thirty-nine vehicle (eight out of service) and seven driver (one out of service) violations were discovered.

Crashes:

- No activity reported.

Notables:

- 4/12 Orleans County. Inspector with K9 attended monthly canine in-service training.



- 4/13 Coventry detail. An Inspector conducting a Level 2 inspection issued the company a ticket for an overweight violation. The CMV was weighed on portable scales and found to be 7,000 lbs over limits.



- 4/14 WRJ detail. An Inspector conducting a Level 2 inspection placed the CMV out of service for an inoperative emergency brake.
- 4/14 WRJ detail. An Inspector placed a CMV out of service in combination for an improper repair to a trailer air brake supply hose. The hose had been repaired using a worm clamp.



- 4/14 WRJ detail. An Inspector conducting a Level 2 inspection on an empty cargo tank tractor trailer placed the CMV out of service in combination for a defective upper fifth wheel coupler. The upper fifth wheel coupler had cracks in repair welds that met the out of service criteria.





- 4/14 Hartford detail. An Inspector conducting a Level 2 inspection of a five axle CMV placed the CMV out of service for a body component contacting a tire. The support for the wheel well broke resulting in the fender contacting the tire and causing damage.



- 4/14 Hartford detail. An Inspector placed a CMV out of service for defective brakes and suspension components contacting a tire. The CMV had a number of brakes out of adjustment which exceeded 20%. Due to worn components, the alignment of axle #3 resulted in the rims and tires contacting the suspension on both the left and right sides.





- 4/14 Hartford detail. An Inspector conducting a Level 2 inspection placed the CMV out of service for a defective brake hose (chaffed through the outer reinforcement layer). The driver was placed out of service for no record of duty status. (see additional inspection on this same vehicle and driver in Ryegate below).
- 4/15 Ryegate NB. An Inspector conducting speed enforcement on I 91 stopped a CMV for traveling at 77mph in a 65mph zone. It was the same CMV and driver that he had placed OOS for a damaged air hose and no logs on 4/14 at the Hartford detail. The damaged air hose had not been repaired. An inspection was completed. The vehicle was placed out of service and the company was issued a ticket. The driver stated that the owner of the company did not want to pay for roadside repair and told him to drive to his next delivery, buy the required materials, and make the repairs himself.



- 4/15 Ryegate. An Inspector conducted an inspection on a five axle CMV. The carrier was found to be under suspension for CCN. The CMV was grounded until the suspension was cleared. The Inspector worked with the carrier to clear up the suspension and get reinstated.
- 4/15 Ryegate, I 91 North. An Inspector stopped a passenger vehicle for speeding. The operator was found to be operating while their license was suspended-civil. Tickets were issued for the speed and suspended license violations.

#### New Entrant:

- Sixteen carriers contacted regarding audit, document uploads, inactivation, or closeout. Three audits completed. 36 hours.

#### Passenger Vehicles:

- No activity reported.

### SOUTH SECTOR:

#### Details:

- 4/12 Guilford NB, I-91, 4 Inspectors screened 152 vehicles. They completed 11 Level 2 inspections resulting in 10 vehicle and 6 driver violations, with 2 vehicle OOS violations. Additionally, 5 platform weights were verified and 5 OS/OW permits checked for compliance.
- 4/14 Vernon SB, I-91, 4 Inspectors screened 235 vehicles. They completed 11 inspections resulting in 33 vehicle violations and 3 driver violations. Eight vehicles and 2 drivers were placed out of service. Six OS/OW permit were checked, and 6 platform weighs verified.



#### Crashes:

- 4/14 Inspector responded to a tractor trailer rollover on I91 South at exit 6. The vehicle had flipped over at the top of the entrance ramp and slid across the entire Interstate. Approximately 50 gallons of fuel were spilled, and the Interstate was closed for approximately 6 hours. The vehicle was recovered by a heavy duty tow truck, and a level 1 post-crash was completed. The investigation continues.



Notables:

- 4/11 Inspector conducted a traffic stop on a CMV in WRJ and completed a level 2 inspection. The trailer was found to have an audible air leak due to a damaged chaffed plastic airline. The damage extended through the outer and inner cores and a hole was found. The trailer was placed out of service until repairs could be made on scene.



- 4/11 Inspector conducted a traffic stop on a CMV in WRJ and completed a level 2 inspection. She discovered an air hose that had been cut. The damage extended through the reinforcement ply and the truck and trailer combination was placed out of service until repairs could be made.



- 4/11 Inspector conducted a traffic stop and discovered an audible air leak at the rear of a trailer. Two holes were discovered in a small air bladder. This air bladder was part of the suspension system, not the brake system. The CMV passed an air drop test, and this was marked as a violation only.



- 4/12 Inspector discovered a CMV that was not marked with a US DOT number as required or have a short-term lease agreement. The driver did not have a medical certificate. The driver and company were given warning for the violations.





- 4/12 Inspector placed a driver out of service at the Guilford detail for not having a medical card with a prior written warning.
- 4/12 Inspector located defective tie downs during an inspection at the Guilford detail. The vehicle was placed out of service until the load was properly secured with undamaged securement devices.



- 4/12 Inspector discovered a leaking inner wheel seal that had contaminated the brake friction material during an inspection at the Guilford detail. The vehicle was placed out of service and repaired on site.



- 4/12 Inspector discovered tires worn below 2/32-inch tread depth during an inspection at the Guilford detail. The tires were in a dual set and although close did not meet the out of service criteria. The violation was documented, and vehicle continued to its destination.



- 4/12 Inspector discovered several flat spotted tires on the trailer of a CMV while conducting a level 2 inspection at the Guilford detail. The damage was only located on half the tire which did not meet the OOS criteria. The violation was marked as a defect only.



- 4/12 Inspector conducted a traffic stop on a CMV that did not stop at the Guilford detail. She discovered a cut tire with belt material exposed but it did not meet the 2" OOS criteria. The defect was marked as a violation only.



- 4/12 Inspector discovered a bald tire during a level 2 inspection at the Guilford detail. The tire was in a dual set and was marked as a violation only because the other tire did not meet the OOS criteria.



- 4/12 Inspector traveling from the from the Guilford detail and observed a CMV traveling SB on I91 with a significant amount of smoke coming from the rear of the trailer. A traffic stop was conducted near Rockingham. The Rockingham Fire Department was called due to continuing smoke and potential fire hazard. The trailer was hauling pelletized fertilizer. It was determined that there was a significant brake failure. The rear right brake was suspected to have failed due to a preexisting crack on the brake chamber. The chamber failed and the entire brake canister broke off, causing a loss of air pressure and locking up both the tires. The air canister was being dragged down the interstate by the air hose. An inspection was completed and the CMV was placed out of service until the brake could be repaired.

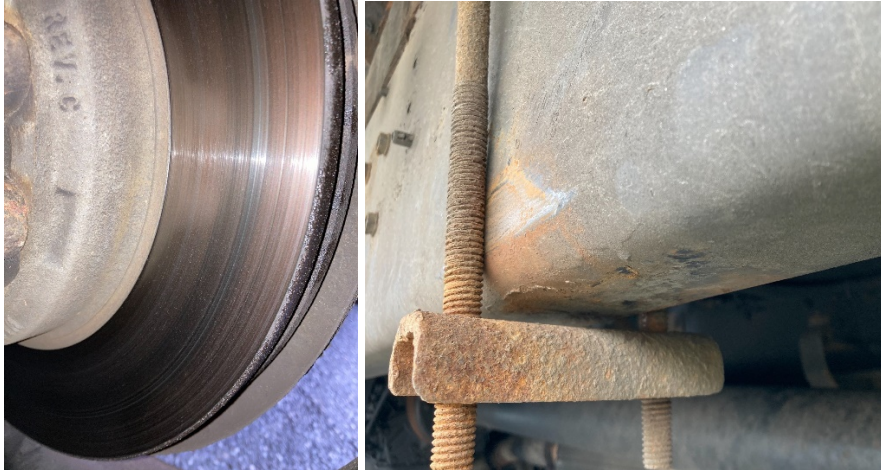


- 4/13 Inspector stopped a tractor trailer truck on VT Rte107 that was hauling an intermodal on an intermodal chassis. During the inspection it was discovered the



brake lights on the rear of the chassis were not working. The vehicle was placed out of service and escorted to a local repair facility less than a mile away.

- 4/14 Inspector completed a level 1 inspection on a 2 axle box truck and found a leaking inner wheel seal that contaminated the brake rotor friction surface, as well as an ABS malfunction and a loose mounting U-bolt holding the box to the vehicle frame. The vehicle was placed OOS and repaired roadside.



- 4/14 Inspector stopped a tractor trailer combination on I-89 in Sharon for smoke coming from the left rear trailer brakes. The driver admitted to overusing the brakes coming down a long grade into a construction area near mile marker 15. During the inspection no mechanical brake defects were discovered and the problem was attributed to driver error, however a fuel leak was discovered. The fuel was leaking from the fuel tank on the trailer for the refrigeration unit. The vehicle was placed out of service.



- 4/14 Inspector discovered a chafed air hose at the Vernon detail, the air hose was chafed through the reinforcement ply into the inner core. The trailer was placed out of service until it was repaired on scene.



- 4/14 Inspector conducted a traffic stop on her way to the Vernon detail. The truck and trailer inappropriately used a U-turn on I 91 and pulled back onto the interstate in front of her cruiser. The truck/trailer combination was found to be in interstate commerce and a level 2 inspection was completed. The truck had no US DOT markings, the driver was found to have no medical card and no records of duty

status. The trailer was found to have multiple defects and was placed out of service. The trailer had no breakaway cable, an inoperable safety chain, no trailer lights, several bald tires, several wheel fasteners missing, not registered, not insured. The trailer is owned by a Vermont used car dealer. Follow-up investigation continues.



- 4/14 Inspector discovered an ELD not connected to the vehicle during an inspection at the Vernon Detail. The VIN and unit number were incorrect and the ELD was not recording GPS locations, engine hours or miles, and all the entries were being manually entered by the driver. The driver was placed out of service for 10 hours.

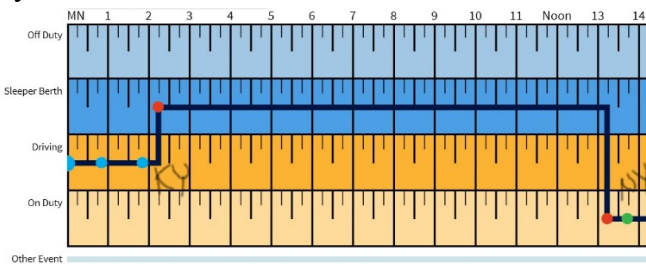


- 4/14 Inspector completed a level 3 inspection of an oversized load transporting a bulldozer with no permit. The vehicle was marked with OVERSIZE LOAD and flagged. The load was measured at 9 feet wide with a maximum legal width of 8'6". The combination vehicle was grounded, and the load adjusted on the trailer to meet the legal width limit.





- 4/14 Inspector placed a driver out of service for false logs at the Vernon detail. The driver was found to have consistently been unplugging his EDL. On 4/13 the driver was in KY, took a 10-hour sleeper berth “break” and then appeared in NY later that day. There was no co-driver.



|            |          |                      |         |        |
|------------|----------|----------------------|---------|--------|
| 04/13/2022 | 00:50:38 | 2mi SW KY Sadieville | 741,326 | 0      |
| 04/13/2022 | 01:50:44 | Not Available        | 741,326 | 0      |
| 04/13/2022 | 02:13:56 | Not Available        | 741,861 | 0      |
| 04/13/2022 | 02:13:59 |                      |         |        |
| 04/13/2022 | 13:13:37 | Buffalo (Manual)     | 741,861 | 0      |
| 04/13/2022 | 13:43:07 | buffalo (Manual)     | 741,861 | 0      |
| 04/13/2022 | 23:20:51 |                      | 741,861 | 26,046 |
| 04/14/2022 | 09:13:23 | 1mi SW VT Northfield | 742,383 | 0      |

- 4/14 Inspector observed a tractor trailer travelling on I-91 come to a sliding smoking stop after the emergency air line detached from the trailer and the spring brakes applied due to the loss of air pressure. An inspection revealed the driver did not have a CDL, the truck tractor was not registered and displayed a plate not assigned. The

driver also had no ELD or record of duty status. The vehicle also had multiple flat tires, was not properly marked, and had flat spotted and partially melted the tires on the trailer. The vehicle was placed out of service and towed from the scene by a towing company the carrier had arranged.



New Entrant:

- Nothing to report.