

## COMMERCIAL VEHICLE ENFORCEMENT UNIT (3/7-3/13)

### NORTHWEST SECTOR:

#### Details:

- 3/9 Georgia SB, I-89, 7 Inspectors & 1 DMV Investigator screened 185 vehicles. They completed 38 inspections which resulted in 56 vehicle and 4 driver violations. Five vehicles and two drivers were placed out of service.
- 3/10 Ferrisburgh NB, US Rte 7, 3 Inspectors screened 53 vehicles. They completed 12 inspections which resulted in 6 vehicle violations. One vehicle was placed out of service.
- 3/10 Ira WB, US Rte 4, 3 Inspectors screened 115 vehicles. They completed 20 inspections which resulted in 13 vehicle and 5 driver violations. Two vehicles and one driver were placed out of service.

#### Crashes:

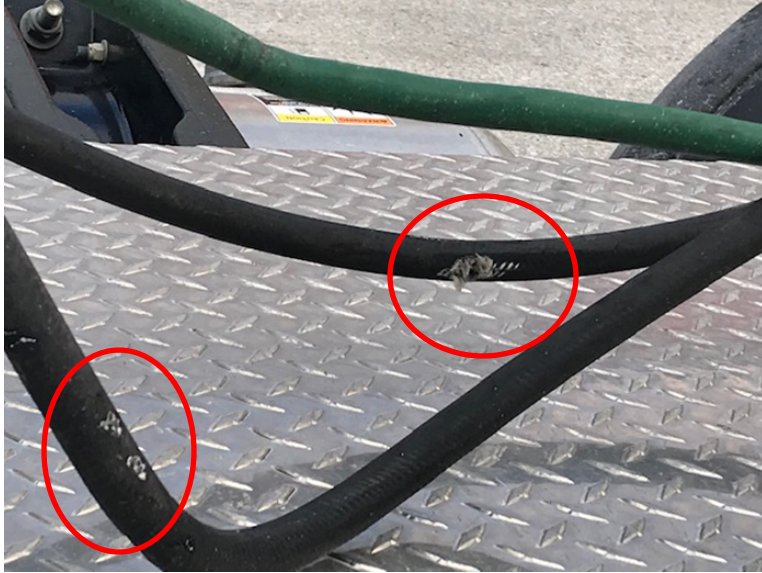
- Nothing to report.

#### Notables:

- 3/9 Inspector inspected a box truck at the Georgia detail. The New York state based motor carrier operating the vehicle had a suspended operating privilege in Vermont. The vehicle was grounded until the carrier's privilege was reinstated.



- 3/9 Inspector inspected a tractor trailer at the Georgia detail. The inspection revealed both glad hand lines were chafed and the service line's damage had frayed the inner ply. The combination was placed out of service for repair.



- **3/9 Inspector inspected a truck towing a car hauler at the Georgia detail. The truck was placed out of service for having chains, wood, and cargo straps unsecured from falling onto the highway on the flat bed of the truck.**



- **3/9 Inspector inspected a box truck at the Georgia detail. The driver was placed out of service as his CDL and medical certificate showed that he is required to wear corrective lenses and he was not.**



- **3/9 Inspector inspected a tractor trailer at the Georgia detail. The driver was required to use an ELD. Instead, he was using an electronic device that was not connected to the truck tractor. The driver was placed out of service for 10 hours off duty.**



- **3/10 Insp. Quenneville placed a CMV out of service for a missing hubcap plug, allowing an open view into the hub assembly, at the Ira detail.**



- **3/10 Insp. Hanley inspected a tractor trailer at the Ira detail. The driver was placed out of service for 10 hours off duty for having a false record of duty status. The driver had placed himself off duty and continued to drive approximately 600 miles.**

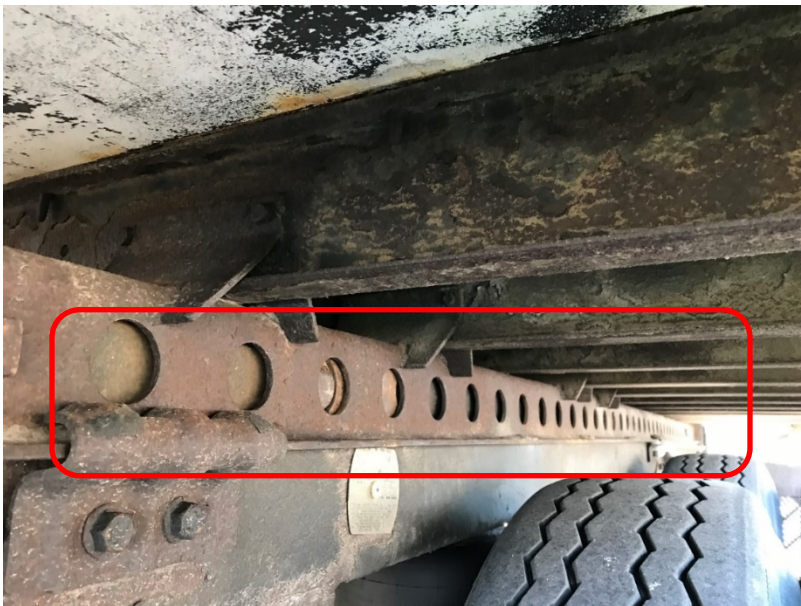


- **3/10 Insp. Hanley inspected a tractor trailer at the Ira detail. A 5 year old child was unsecured in the sleeper berth. A proper child restraint safety system is required. The CMV was grounded as such until the driver was able to obtain and utilize a proper child restraint safety system.**





- 3/10 Cpl. Paul inspected an intrastate tractor trailer at the Ferrisburgh detail. The trailer was placed out of service as none of the locking pins on the sliding suspension were engaged.



- **3/12 Inspector conducted a traffic stop on I89 in Richmond on a passenger car observed overtaking a tractor trailer at more than 90 miles an hour. The operator of passenger car was issued a traffic ticket for speeding.**

**Passenger Carrier:**

- **Nothing to report.**

**NORTHEAST SECTOR:**

**Details:**

- **3/10 Lyndonville Rest, I-91 SB. Five Inspectors screened 140 vehicles. Nineteen inspections were completed. Twenty-four vehicle (two out of service) and six driver violations were discovered.**

**Crashes:**

- **No crashes were reported.**

**Notables:**

- **3/8 Fairlee, US Rte 5. An Inspector conducting a Level 2 inspection placed the CMV out of service for the carrier's USDOT number being inactive.**
- **3/10 Lyndonville detail. An Inspector conducting a Level 2 inspection on an empty four axle CMV placed the CMV out of service for a broken suspension main leaf.**



- **3/10 Lyndonville detail. An Inspector conducting a Level 2 inspection on a CMV placed the CMV out of service for a defective tire.**



- **3/10 Lyndonville detail. An Inspector conducting a Level 2 inspection on a five axle CMV discovered a crack in the fifth wheel and loose bolts securing the upper fifth wheel to the frame.**
- **3/10 Lyndonville detail. An Inspector conducting a Level 2 inspection on a four axle CMV placed the CMV out of service for no operable brake lamps. The CMV was also not currently inspected.**
- **3/12 Fairlee, I-91 SB. An Inspector stopped to assist the driver of a passenger vehicle change a flat tire. The driver was found to be operating after suspension- civil. The vehicle was grounded and a ticket was issued to the driver. The suspension was for failure to pay a fine.**

**New Entrant:**

- **Twenty-two carriers contacted regarding audit, document uploads, inactivation, or closeout. Four audits completed. 31.25 hours.**

**Passenger Vehicles:**

- **No activity reported.**

**SOUTH SECTOR:**

**Details:**

- **3/9 South Sector Inspectors joined the Northwest Sector at a joint detail at I89 Georgia Northbound Rest Area.**
- **3/11 Bridgewater WIMS, US Rte 4, 3 Inspectors screened 34 vehicles. They completed 10 inspections.**



#### **Crashes:**

- **3/11 Inspector responded to assist the Vermont State Police Rutland Troopers, and IRA & West Rutland Fire Depts with a CMV that had gone off the road on VT Rte 133 in Ira. The driver of the tractor trailer had gone off the road after trying to negotiate a sharp curve. After leaving the roadway, the tractor trailer went through the front yard of a residence, over the top of two water well casings and then narrowly missed a 500 gallon LPG tank. The tractor trailer then hit the corner of the house and went down over a retaining wall before coming to rest and catching fire. The driver was able to break out the windows and crawl to safety before the entire tractor was engulfed by fire. The crash is still under investigation by CVE and VSP officers.**





**Notables:**

- **3/8 Inspector answered questions regarding the dimension requirements needed to obtain a 99,000lb excess weight permit from a carrier based in Pawlet, Vt.**
- **3/8 Inspector found a driver of a CMV did not have the proper license endorsement during an inspection on US Rte 5 in Fairlee. The vehicle was equipped with a 2,500-gallon tank and the driver did not have a tank endorsement on his CDL. The driver was placed out of service.**



- **3/9 Inspector completed an inspection at the Georgia detail. During a Level 1 inspection a carrier was found to have an inactive US DOT number. FMCSA staff verified this, and the truck was placed OOS and the carrier issued a ticket.**
- **3/9 Inspector was conducting a Level 2 inspection of a local lumber delivery truck and a pallet of shingles was not properly secured. The CMV was placed**

**Out of Service. Then during a Level 2 inspection of another lumber delivery truck from the same company two U-bolts securing the truck body to the frame were found to be loose.**



- **3/10 Inspector discovered this leaking inner wheel seal which had contaminated the brakes with oil during an inspection on US Rte 4 in Ira. The vehicle was placed out of service and repairs were made on site.**



- **3/10 Inspector assisted a New Entrant Auditor with verifying VIN information and seating capacity for some passenger vehicles.**



- **3/10 Inspector located a broken and leaking hydraulic fitting during an inspection on US Rte 4 in Ira.**