

COMMERCIAL VEHICLE ENFORCEMENT UNIT (3/21-3/27)

NORTHWEST SECTOR:

Details:

- **3/23 Williston SB, I-89, 6 Inspectors screened 225 vehicles. They completed 16 inspections which resulted in 17 vehicle and 3 driver violations. One vehicle and one driver were placed out of service.**
- **3/24 Ira WB, US Rte 4, 6 Inspectors screened 84 vehicles. They completed 24 inspections which resulted in 11 vehicle and 2 driver violations. Two vehicles and one driver were placed out of service.**
- **3/25 Georgia SB, I-89, 6 Inspectors and 1 DMV compliance investigator screened 127 vehicles. They completed 22 inspections which resulted in 37 vehicle and 9 driver violations. Four vehicles and two drivers were placed out of service.**

Crashes:

- **3/22 Inspector responded to the report of a grain truck which rolled over on the I89 Exit 12 SB on ramp. Upon arrival, a 4- axle loaded grain truck was observed resting on its driver's side on the northern shoulder of the on ramp. The driver of the truck stated he believed the brakes malfunctioned as he was unable to slow the truck descending VT Rte 2A approaching the I89 interchange. The driver did admit he failed to utilize the drop axle during his trip from Brandon, VT. The driver presented a weight slip indicated the truck weighed over 72000 pounds. Due to failing to utilize the drop axle the truck was not utilizing two operational brakes and the driver negated the 4-axle overweight permit. An inspection was conducted, and the truck's brake system was functional. Multiple defects were noted on the inspection report and the vehicle was towed back to the company's terminal. A weight restriction ticket was issued.**



- **3/23 Inspector responded to a tractor trailer and car collision on VT Rte 22a in Orwell. The operator of the passenger car was air lifted to the hospital with serious injuries. The driver of the tractor trailer was transported to the hospital with minor injuries. The passenger car collided with the front and driver's side of the tractor trailer.**



Notables:

- **3/23 Inspector inspected a dump truck at the Williston detail. The dump truck appeared overweight and a portable weigh and inspection were conducted. The company did not have an overweight permit and the weigh revealed the truck was over 10000 lbsoverweight. A ticket was issued to the company.**



- **3/23 Inspector inspected a tractor trailer at the Williston detail. The trailer was placed out of service for a tire that was leaking air.**



- **3/23 Inspector inspected a box truck at the Williston detail. The inspection revealed the driver's operating privileges were suspended in their home state. The driver was placed out of service and a ticket was issued.**



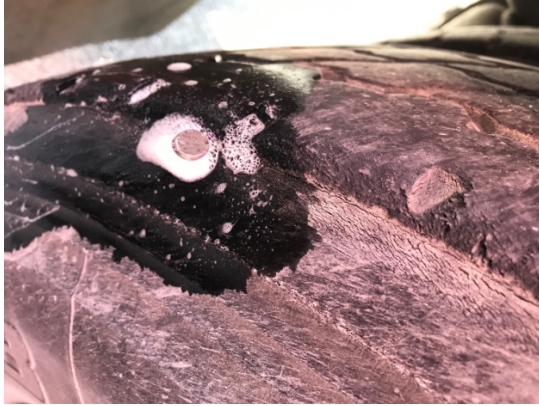
- **3/23 Inspector inspected an interstate tractor trailer at the Williston detail. The tractor was placed out of service due to active fuel leaks.**



- **3/24 Inspector inspected a tractor trailer at the Ira HP detail. The inspection revealed the driver's side fuel tank had a leak which was pooling fuel on the asphalt. The truck was placed out of service for repair.**



- **3/25 Inspector inspected a tractor trailer at the Georgia detail. The inspection revealed the rearmost stop lamps were inoperable on the trailer. The trailer was placed out of service for repair.**
- **3/25 Inspector inspected an interstate tractor trailer at the Georgia detail. The tractor was placed out of service for a nail in a tire, which was actively leaking air.**



- **3/25 Inspector inspected an interstate tractor trailer at the Georgia detail. The driver was placed out of service as his CDL had been downgraded, due to lack of a valid medical card. The trailer was placed out of service for a non-manufactured hole in a spring brake can.**



- **3/25 Inspector inspected an interstate car hauler at the Georgia detail. The vehicle was placed out of service until the carrier obtained the required operating authority.**



Passenger Carrier:

- Nothing to report.

NORTHEAST SECTOR:

Details:

- **3/23 Coventry Rest Area, I-91 SB. Five Inspectors screened 130 vehicles. Nineteen inspections were completed. Twenty-nine vehicle (four out of service) and four driver (one out of service) violations were discovered.**
- **3/25 Waterford Rest Area, I-91 NB. Four Inspectors screened 135 CMVs. Seventeen inspections were completed. Forty-nine vehicle (five out of service) and two driver violations were discovered.**

Crashes:

- No crashes were reported.

Notables:

- **3/23 Coventry detail. An Inspector conducting a Level 2 inspection on a two axle CMV transporting auto parts discovered a defective hose meeting the out of service criteria. The hose, an air brake chamber supply hose, had damage through the outer reinforcement layers. An inspection was completed and the CMV was placed out of service.**



- **3/23 Coventry detail. An Inspector conducting a Level 2 inspection of an empty six axle CMV discovered a defective lower fifth wheel. The defect, loose bolts securing the lower fifth wheel to the frame, did not meet the out of service**

criteria. Guidance was provided to the operator about including checking fifth wheel bolts as part of his pre-trip inspection.



- **3/23 Coventry detail. An Inspector conducted an inspection on a two axle CMV transporting general freight. The operator of the CMV was not keeping time records and there was no emergency equipment in the CMV. The driver was placed out of service and tickets were issued.**
- **3/23 Coventry detail. An inspector conducting a Level 2 inspection on a six axle CMV towing a lowboy trailer placed the CMV out of service. The trailer was not inspected and had non-manufactured holes in the brake chambers and defective hoses. Tickets were issued to the company.**



- **3/24 Lunenburg, US Rte 2. An inspector conducting a Level 2 inspection on a six axle CMV discovered the motor carrier failed to correct defects (ABS and defective tire) as noted on a previous inspection report. The defects were noted and a ticket was issued to the carrier for failing to correct the defects. It should be noted that in the first instance, the roadside inspector has issued warnings for the violations.**

- **3/25 Coventry, I-91 NB. An Inspector assisted a CMV stopped on the side of the highway with a load securement issue. The Inspector assisted the driver in restacking the load and the driver secured it per regulations. No action taken.**



New Entrant:

- **Fourteen carriers contacted regarding audit, document uploads, inactivation, or closeout. Five audits completed. 30 hours.**

Passenger Vehicles:

- **No activity reported.**

SOUTH SECTOR:

Details:

- **3/22 East Dorset, US Rte 7S, 6 Inspectors screened 59 vehicles. They completed 18 inspections resulting in 26 vehicle violations (3 vehicle out of service violations) and 1 driver violation.**



Notables:

- **3/23 During the East Dorset detail, a farm truck loaded with round hay bales was observed lacking adequate tiedowns. The driver called for more straps and resecured the load before continuing.**



- **3/23 Inspector conducted a level 1 inspection on a water hauler. Six violations were noted. The trailer was placed out of service after a crack was located on the frame between axles. The driver left the trailer at the detail site and was unsure how the carrier was going to address the problem.**



- **3/23 Inspector discovered multiple out of service violations on a tractor trailer (water hauler) combination during a Level 1 inspection at the Emerald Lake detail. Both the primary and secondary air reservoir tanks had broken mounts, a tire was cut with cord showing in the sidewall and a loose universal joint was discovered. The vehicle was placed out of service.**



- **3/24 Inspector conducted a level 2 hazmat inspection at the Ira rest area. The inspection revealed product on the vehicle was not represented on the shipping paper.**
- **3/25 Inspector had a tractor trailer combination with no valid IRP or IFTA for the CMV at the Waterford Welcome Center. The NH based carrier was forced permitted for 72-hour IRP and IFTA permits roadside, and the owner was educated on the regulations. Several other equipment violations were discovered during the inspection, including an exhaust leak under the cab and a marking violation.**
- **3/24 Inspector was observing traffic on VT Rte 9 in the town of Brattleboro when the Inspector noticed a truck towing a mobile home pass by his location with sparks flying. As it passed, he noticed that the front axle on the trailer was broken in half and dragging on the pavement. An inspection was conducted no other violation were found but the broken trailer axle. The mobile home trailer**

was placed out of service until the axle was replaced.



- **3/25 Inspector completed a Level 2 inspection at the Waterford detail. During his inspection it was found the CMV primary service airline to the trailer had a hole through reinforcement ply with fraying. Truck was placed out of service in combination.**
- **Inspectors assisted VDH Contact Tracing Team. Some cases with over 30 close contacts. They have received extraordinary praise at not only the local level but also the national level for there for their diligence and hard work.**

New Entrant:

- **Two audits are in progress.**

Passenger Vehicle:

- **Nothing to report.**