

COMMERICAL VEHICLE ENFORCEMENT UNIT (2/27-3/12)

NORTHWEST SECTOR:

Details:

- 3/8 Colchester NB, I-89, 7 Inspectors and the guard CST team screened 385 vehicles. They completed 37 inspections which resulted in 36 vehicle and 4 driver violations. Three vehicles and two drivers were placed out of service.
- 3/10 Ira WB, US Rte 4, 4 Inspectors screened 126 vehicles. They completed 15 inspections which resulted in 7 vehicle and 8 driver violations.
- 3/10 Highgate POE, I-89, 3 Inspectors screened 45 vehicles. They completed 9 inspections which resulted in 4 driver violations. One vehicle was placed out of service.

Crashes:

- 3/7 Inspector was notified of a school bus crash in Colchester. Colchester PD advised a contracted school bus crashed into the rear of a vehicle stopped in traffic. No injuries were reported by the occupants of the school bus; however, the passenger car occupant was transported from the scene with likely injuries. The Inspector responded to bus terminal in Milton to inspect the bus. The company reported the bus was transporting students from home to school at the time of the crash. A level 7 state jurisdictional inspection was conducted. The only defect noted was due to the crash. Operator error was the likely cause of the collision.



Notables:

- 3/7 Inspector stopped this 6 axle chip truck traveling west on US Rte. 4 in Fair Haven for a suspected overweight. The truck was taken to the Fair Haven Scale

House for a platform weigh. The truck was found to weigh 105,340 lbs., 6340 lbs. in excess of its 99K permit. The carrier was ticketed.



- **3/7 Inspectors conducted a Level VI inspection of radiological material entering the United States at Derby Line. After the CMV was inspected, the shipment was transferred to NHSP Troop G troopers.**
- **3/8 Inspector inspected a box truck at the Colchester detail. The driver emitted a strong odor of intoxicants and was screened for DUI. The driver had a detectable amount of alcohol on the alco sensor but was not DUI. The driver was ticketed for having a detectable amount of alcohol in a CMV and was placed out of service for 24 hours.**



- **3/8 Inspector inspected a tractor trailer at the Colchester detail. The truck tractor was placed out of service for a flat tire.**



- **3/8 Inspector inspected a interstate tractor trailer at the Colchester detail. The trailer was placed out of service for inoperable brake lamps and an inoperable turn signal.**



- **3/8 Inspector inspected an interstate box truck at the Colchester detail. The vehicle was grounded, as the carrier was under suspension in VT.**
- **3/8 Inspector inspected a tractor trailer at the Colchester detail. The CMV was grounded for not having IFTA. The driver was shown how to apply for a 72 hour permit in VT.**



- **3/8 Inspector inspected a box truck at the Colchester detail. The inspection revealed the carrier was suspended. The truck was grounded until the company was reinstated.**



- **3/9 Inspector stopped a wrecker hauling a trailer on US Rte. 7 in Middlebury. There were no working lights on the trailer. There was pile of loose gravel on the trailer as well. The trailer was placed out of service until the defects were corrected.**



- **3/9 Inspector inspected a tractor trailer in Shoreham. The trailer was placed out of service as the integrity of the passenger side rear door was compromised and spare wood was hanging out of the door with no means to prevent it from falling onto the highway. The truck tractor was placed out of service as the emergency glad hand hose had reinforcement ply exposed and it was frayed and cut.**



- **3/9 Inspector inspected a car hauler in Orwell. The trailer was placed out of service for a flat tire.**



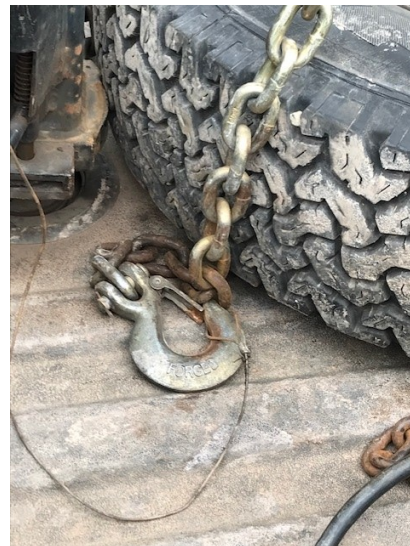
- **3/9 Inspector inspected a box truck in Shoreham. The truck was placed out of service as the parking brake was inoperable.**



- **3/11 Inspector inspected a tractor trailer in Shoreham. The truck tractor was placed out of service for a flat tire and the trailer was placed out of service for no operable brake lamps.**



- **3/11 Inspector inspected a truck and trailer in Orwell. The truck was placed out of service as the breakaway cable was improperly connected. The cable was connected from the trailer to a chain on the trailer.**



- **3/11 Inspector stopped this 6 axle log truck on US Rte. 4 in Fair Haven for a suspected overweight. The truck was escorted to the Fair Haven Scale House for a platform weigh. The truck was found to be 107,020 lbs., 8020 lbs. in excess of its 99K permit. The carrier was ticketed.**



- **3/11 Inspector stopped a container truck for an equipment violation. A subsequent inspection was conducted and it was observed the rear of the container was not secured to the truck. The truck was placed out of service for the infraction and the driver remedied the defect.**



Passenger Carrier:

- **Nothing to report.**

NORTHEAST SECTOR:

Details:

- **3/8 Lyndonville Rest Area, I 91 S. Three Inspectors screened 114 CMVs. Fourteen inspections were completed. Five driver and nine vehicle violations were discovered.**
- **3/10 Ryegate Rest Area, I 91 N. Four Inspectors completed twenty-five inspections. Eight driver (one out of service) and twelve vehicle (two out of service) violations were discovered.**

Crashes:

- **No activity reported.**

Notables:

- **3/8 Thetford, I 91. An Inspector responded to a report of a CMV that had lost a set of dual tires. The brake drum failed which led to the wheel seizing and shearing off the mounting bolts. No damage to other vehicles/property was reported. An Inspection was completed and the CMV was placed out of service.**



- **3/9 Coventry, US Rte 5. An Inspector on patrol stopped a six-axle combination vehicle that was hauling an excavator. The vehicle was not displaying flags or oversized load signs. The vehicle did not have a permit to haul the over dimension piece of equipment. The carrier elected to contract with another company to remove the excavator from the site of the inspection. A portable weigh was conducted and a ticket was issued to the company.**



- **3/9 Coventry, I 91 N. An Inspector stopped and weighed a six axle CMV transporting logs. The CMV was found to be operating 8,000 lbs over its permitted weight limits. A ticket was issued to the company.**



- **3/10 Ryegate detail. An Inspector weighed and inspected a five axle CMV transporting logs. The CMV was found to be 13,000 lbs over the road limits without a permit. A ticket was issued to the company.**



- **3/10 Ryegate detail. An Inspector conducting a Level 2 inspection of an empty four axle CMV placed the CMV out of service for defective suspension parts. The U-bolts on the front axle securing the suspension to the axle were loose resulting in axle displacement between the axle and suspension while the steering was turned. This violation leads to a loss in effective steering and if not detected/repaired, could lead to complete steering loss. To view a video of the effects this violation has on smooth steering visit: <https://www.youtube.com/shorts/3-jacPZkSel>**

- **3/10 Ryegate detail. An Inspector conducted a Level 3 inspection of a CMV. The operation required an ELD for the driver. An ELD was not present and the driver was placed out of service for the violation.**
- **3/10 Ryegate detail. An Inspector conducting a Level 3 inspection placed the driver out of service for not wearing corrective lenses when required per his driver's license.**
- **3/10 Ryegate detail. An Inspector conducting a Level 2 inspection on a tractor trailer noted a violation for a loose bolt securing a fifth wheel halve to the frame. There were no other loose fasteners found.**



- **3/11 Hartford, I 91 S. An Inspector stopped a CMV for speeding. A warning was issued to the driver and a Level 3 inspection was completed.**



New Entrant:

- **Eight carriers contacted regarding audit, document uploads, inactivation, or closeout. Three audits completed. Attended MCSAP recertification training. 38 hours.**

Passenger Vehicles:

- **No activity reported.**

SOUTH SECTOR:

Details:

- **3/8 Vernon, I 91 S, 5 Inspectors screened 220 vehicles. They completed 13 inspections, 6 level 1, 5 level 2, 1 level 2 hazmat and, 1 level 3, which resulted in 4 driver violations, 16 vehicle violations. One driver and 2 vehicles were put out of service.**



- **3/10 Bridgewater, US Rte. 4, 4 Inspectors screened 42 vehicles. They completed 14 inspections, 8 level 2, 3 level 2 hazmat, 3 level 3, which resulted in 6 driver violations and 16 vehicle violations. Three vehicles out of service. Three permits were checked, and all permitted vehicles were found to be in compliance.**



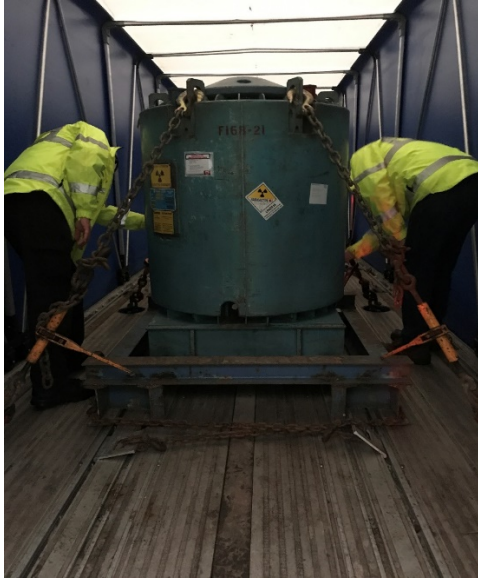
Crashes:

- **3/12 Inspector responded to an overturned, fully loaded, milk tanker in West Addison. The driver failed to maintain lane, went off the soft shoulder drove down and embankment and crashed through a telephone pole spilling hundreds of gallons of raw milk into a culvert on top of downed power lines. The driver was transported to UVM Medical Center prior to VSP and DMV arrival due to injury. The investigation is still ongoing.**



Notables:

- **3/7 Inspectors completed a Level VI inspection at the Derby POE, then escorted the CMV through VT before turning over security to the NH State Police.**



- **3/8 Inspectors found two damaged air hoses on two separate CMV's at both the Vernon and Bridgewater details. Both CMV's were placed out of service due to the damage extending through the reinforcement play and into the inner core of the air hose.**



- **3/8 Inspector conducted a level 2 inspection on a CMV that entered the Vernon detail with a detached fuel cap. Luckily, fuel had not spilled, it was marked as a violation and fixed.**



- **3/8 Inspector discovered a cracked exhaust pipe. The damage did not meet the out of service criteria and was marked as a violation only.**



- **3/8 Inspector completed a level 3 inspection at the Vernon detail and found an ELD malfunction; log did not accurately reflect the actual driving time during most of the 8 day required period. The driver was aware of the ELD malfunction and stated it never worked correctly. Despite the malfunction, the driver did not have paper logs in his possession. The driver was placed OOS for 10 hours.**

- **3/8 Inspector discovered a loose pitman arm during a level 1 inspection at the Vernon detail. The vehicle was placed out of service.**



- **3/8 Inspector discovered a cracked axle positioning component during a level 1 inspection at the Vernon detail. The defect did meet the out of service criteria and the vehicle was placed out of service.**



- **3/9 Inspector patrolled I-91 and conducted a traffic stop on a box truck for speed. The driver was warned for speed and for having an expired medical certificate.**

- **3/9 Inspector conducted a traffic stop for speed on I-89 in Sharon and conducted a portable weigh. The loaded log truck was found to weigh 118,300 lbs on a valid Vermont 99k permit. An overweight ticket was issued for \$2807.00.**



- **3/9 Inspector conducted a traffic stop on I 89 in Randolph and conducted a level 2 inspection. The tractor trailer was placed out of service for 2 cracks (right and left sides) extending 50% on the pivot bracket of the 5th wheel. The out of service criteria is 20%.**



- **3/9 Inspector conducted a traffic stop on I-89 and placed a log truck out of service for failing to secure a broken tire chain that was riding freely on the trailer bed.**



- **3/9 Inspector was conducting a directed patrol on US Rte 4 in Killington and he stopped a box truck for speed and discovered the operator was interstate commerce and failed to have his medical card with him.**
- **3/10 Inspectors presented a block of instruction to students about the role and duties of a DMV Inspector at the Fair Haven High School.**
- **3/10 Inspector located a flat tire during an inspection at the Bridgewater detail. The vehicle was placed out of service and repairs were made on site.**



- **3/10 Inspector located a defective tiedown during an inspection at the Bridgewater detail. The defective tiedown was replaced by the driver before continuing the trip.**



- **3/10 Inspector discovered several sections of damaged synthetic webbing on an oversized load at the Bridgewater detail. The trailer was placed out of service until the straps could be replaced.**



- **3/10 Inspector conducted a level 2 inspection on a local wrecker in interstate commerce. The vehicle was placed out of service for equipment falling off the vehicle. The CMV was also found to have several other violations, a bald tire, exposed battery terminals, broken step and was VNI (Oct/20) with no valid insurance card. The driver was given a warning for failing to have a medical certificate.**



- **3/10 Inspector observed a CMV traveling on US Rte. 4 in Bridgewater with a flat tire. He conducted a traffic stop and grounded the trailer in the parking lot of the Killington ski area so the owner could change the tire. The driver advised he was going to make a few phone calls to fix the trailer. Approximately 15 minutes later, the Inspector observed the same vehicle with the trailer attempting to climb the Killington Pass (US Rte. 4) with two flat tires and the rim rubbing on the roadway. The Inspector stopped the vehicle again, however this time several tickets were issued to the operator, and the trailer was towed.**



- **3/11 Inspectors responded to Waterman Road and VT Rte 107 to a report a tractor trailer that drove off the road into a ditch. Inspectors were able to escort the CMV to the AOT garage in Royalton where the truck became inoperable and would not start. Further investigation and inspection revealed the driver failed to have an ELD or record of duty status. In addition, the tractor had an active fuel leak and multiple brake violations placing the truck and trailer out of service.**



- **3/12 Inspectors played in the 17th Annual Enforcers vs. Defender Charity hockey game. Enforcers won 10-3, thousands of dollars were raised to benefit the Vermont National Guard Family Foundation and the Vermont Police Association. The Enforcers now lead the series 9-8. To date the Enforcers have donated over \$250,000 to support Vermont youth hockey since becoming a non-profit in 2012. (PC: Rich Kelley)**



COMMERCIAL VEHICLE ENFORCEMENT UNIT (2/27-3/5)

NORTHWEST SECTOR:

Details:

- **3/3 Fair Haven, US Rte 4 EB, 7 Inspectors and one VT agricultural inspector screened 147 vehicles. They completed 26 inspections which resulted in 13 vehicle and 13 driver violations. Two vehicles and three drivers were placed out of service. The detail opening was delayed due to heavy blowing snow that wasn't forecasted.**

Crashes:

- **3/2 Inspector responded to VT Rte. 22a in Shoreham for a single vehicle tractor trailer which lost control and drove off the east side of the roadway. An inspection was conducted, and the trailer was placed out of service for a flat tire.**



Notables:

- **2/28 Inspector inspected a tractor trailer in Orwell. The carrier was grounded as their privilege to operate in VT was suspended.**



- **2/28 Inspector inspected a tractor trailer in Shoreham. The driver was placed out of service for 10 hours off duty as he did not have record of duty status for the previous 7 days as required.**



- **2/28 Inspector stopped a tractor trailer on I89 in Colchester operating in interstate commerce for an inoperable headlamp. An inspection was conducted and the trailer was placed out of service until the electrical was connected.**



- **3/2 Inspector stopped an interstate HM hauler on I89 in Colchester for an ABS violation. The trailer was placed out of service as the carrier was not in compliance with their DOT special permit. The vehicle was escorted to their terminal for the OOS.**



- **3/2 Inspector inspected a tractor trailer in Shoreham. The trailer was placed out of service for a tire leaking air.**



- **3/3 Inspector inspected an interstate car hauler at the Fair Haven detail. This was a Class A combination and the driver only had a Class D license. The driver was placed out of service.**



- **3/3 Inspector inspected an interstate tractor trailer at the Fair Haven detail. The driver was placed out of service, as his license had expired several months ago. The carrier was also under suspension in VT.**



- **3/3 Inspector inspected a truck and trailer at the Fair Haven detail. The truck was placed out of service as the parking brake was inoperable.**



- **3/3 Inspector inspected a tractor trailer at the Fair Haven detail. The CMV was grounded as the driver had her three year old child in the sleeper berth with no approved child safety restraint system. The driver was attempting to use the sleeper berth cargo netting to secure the child. This attempt was futile. The CMV was grounded until an approved child restraint system was obtained. The driver was ticketed for the violation.**



- **3/3 Inspector inspected a box truck at the Fair Haven scale house detail. The inspection revealed the company's state operating authority was suspended. The truck was grounded until the suspension was remedied.**
- **3/4 Inspector stopped a tractor trailer unit operating on I89 in Georgia for an equipment violation. A subsequent inspection revealed the truck had a torn air hose actively leaking. The truck tractor was placed out of service for the violation.**



- **3/4 Inspector stopped this 6 axle log truck traveling west on US Rte. 4 in Fair Haven. The truck was escorted to the Fair Haven Scale House for a platform weigh. The truck was found to be 112,940 lbs.; 13,940 lbs. in excess of the 99K permit. The carrier was ticketed.**



Passenger Carrier:

- **Nothing to report.**

NORTHEAST SECTOR:

Details:

- **3/2 Ryegate rest area, I 91 N. Three Inspectors screened 92 vehicles. Eight inspections were completed. One driver and six vehicle violations were discovered.**
- **3/3 Northeast patrol, operating authority focus. Five Inspectors completed twenty-one inspections were completed. Eleven driver (two out of service) and seventeen vehicle (three out of service) violations were discovered. One carrier was found note to be properly registered for interstate operations.**

Crashes:

- **No activity reported.**

Notables:

- **2/28 Coventry, I 91. An Inspector stopped and weighed a six axle CMV transporting logs. The CMV was found to be 9,000 lbs over its legal weight limit. An inspection was conducted and a ticket was issued to the company.**



- **3/3 Concord, US Rte 2. An Inspector conducting a Level 2 inspection on a CMV placed the trailer out of service for improper load securement- damaged required web strap. The damage exceeded the limits for a 4-inch strap.**



- **3/3 Wells River, US Rte 302. An Inspector conducted an inspection on a five-axle CMV. The driver was placed OOS for not having a valid medical certificate with a previously cited violation and no records of hours of service. The CMV was placed OOS for an inoperable parking brake and the trailer was placed OOS for not having the emergency break away cable connected to the tow vehicle and inoperable trailer brakes.**



- **3/3 Hartford. I 91. An Inspector conducted traffic enforcement patrol in the reduced 55 MPH zone. Five inspections were completed with speed violations. No tickets were issued as the speeds were below 10 MPH.**



New Entrant:

- Ten carriers contacted regarding audit, document uploads, inactivation, or closeout. Four audits completed. 24.5 hours.

Passenger Vehicles:

- No activity reported.

SOUTH SECTOR:

Details:

- 3/3 WRJ, I-91S, 5 Inspectors screened 286 vehicles. They completed 18 inspections and 2 Hazmat inspections, which resulted in 11 vehicle violations and 11 driver violations. One vehicle was placed out of service and 1 driver was placed out of service.



Crashes:

- 3/4 Inspector responded to Winhall to a report of tractor trailer that was driving on a town road delivering a piano and caught a low wire. As such, the wire pulled down a telephone pole landing on the tractor collapsing the sleeper berth. The vehicle was moved to the AOT garage where an inspection was

completed, and the tractor was placed out of service. This crash is being investigated by Winhall Police Department.



Notables:

- **3/2 Inspector observed unsecured chain on the deck of an empty trailer. The vehicle was placed out of service until the chains were secured.**



- **3/2 Inspectors patrolled US Rte 5, I-91 and I-89 to monitor traffic as a truck convoy protest that moved through Vermont into Northern Massachusetts. Other Inspectors monitored I-89.**

- **3/3 Inspector conducted 3 traffic stops and conducted three roadside inspections on drive-by CMV's while at the Hartford detail.**



- **3/3 Inspector placed a trailer out of service for a flat tire while conducting a level 2 inspection at the Hartford detail.**



- **3/3 Inspector placed a driver out of service for no ELD in an ELD required vehicle. The driver had an ELD but it had been unplugged and was not recording any required data.**



- **3/3 Inspector placed a driver out of service for no logs in an ELD required vehicle. The driver first stated he lost his paper logbook but later admitted he bypassed the detail and begun a paper log after being pulled over. The driver had a history of false logs. The carrier was unable to transfer the drivers logs.**



- **3/3 Inspector discovered a tire that measured 1/32" in two major tread grooves. The tire was in a dual set and did not meet the out of service criteria.**



- **3/3 Inspector completed a Level 3 inspection on a 2-axle box truck and found the vehicles ELD had a GPS malfunction three days earlier; the ELD failed to document a location or mileage for three days. The driver’s daily events were logged on a smartphone app, however, the logs could not be transferred from the app. The violation was documented but did not meet the OOS criteria.**

<input checked="" type="checkbox"/> Engine Power - No Activity						
Date	Time	Location	Odometer	Engine Hours	Event Type/Status	Origin
			event	event		
03/03/2022	06:41:00	Not Available	Missing power-up event	Missing power-up event	On-duty, not driving	ELD
03/03/2022	07:02:00	Not Available	Missing power-up event	Missing power-up event	Driving	ELD
03/03/2022	08:02:00	Not Available	Missing power-up event	Missing power-up event	Intermediate log	ELD
03/03/2022	08:19:00	Not Available	Missing power-up event	Missing power-up event	Driving (Inactive - Changed)	Driver