

## **COMMERCIAL VEHICLE ENFORCEMENT UNIT (10/10-10/16)**

### **NORTHWEST SECTOR:**

#### **Details:**

- **10/12 Williston SB, I-89, 6 Inspectors and 1 trooper screened 292 vehicles. They completed 31 inspections which resulted in 31 vehicle and 1 driver violations. Three vehicles were placed out of service.**
- **10/14 Leicester SB, US Rte 7, 7 Inspectors screened 101 vehicles. They completed 28 inspections which resulted in 22 vehicle and 42 driver violations. Four vehicles and one driver were placed out of service.**
- **10/15 Cambridge, VT Rte 104, 3 Inspectors screened 32 vehicles. They completed 9 inspections which resulted in 4 vehicle violations. One vehicle was placed out of service.**

#### **Crashes:**

- **10/15 Inspector responded to a two-vehicle crash involving a CMV. Investigation revealed a passenger vehicle failed to stop at a stop sign and impacted the right side of a loaded 3 axle dump truck. The operator of the passenger vehicle was transported for minor injuries. The dump truck was placed out of service for damages sustained as a result of the crash.**



#### **Notables:**

- **10/11 Inspector stopped a dump truck that was travelling on I89 in Colchester with its tarp in the raised position, making it over height. An inspection was conducted and the driver was able to lower the tarp.**



- **10/13 Inspector inspected a tractor trailer on VT Rte. 22a in Orwell. The carrier was grounded as their privilege to operate in VT was suspended.**



- **10/13 Inspector inspected a tractor trailer on VT Rte. 22a in Shoreham. The driver was placed out of service for 10 hours off duty for a false log.**



- **10/14 Inspector inspected an interstate tractor trailer at the Leicester detail. The driver was placed out of service for a false log. The driver was falsely showing himself off duty in S.Burlington at the time of inspection, as he had exceeded his 11 hrs. drive time. The driver was ticketed.**



- **10/14 Inspector inspected an intrastate truck and trailer at the Leicester detail. The truck was placed out of service for an inoperable parking brake.**



- **10/14 Inspector inspected a tractor trailer at the Leicester detail. The inspection revealed a tire was blown on the trailer. The trailer was placed out of service for repair.**



- **10/14 Inspector inspected a tractor trailer at the Leicester detail. The inspection revealed a glad hand hose was chafed and the damage caused the inner ply material to fray. The defect constituted an out of service violation and the tractor trailer was placed out of service for repair.**



- **10/14 Inspector inspected a tractor trailer on US Rte. 7 in Leicester. The trailer was placed out of service for a flat tire and for an inner wheel seal that was leaking and contaminating the brake friction surface.**





- **10/15 Inspector inspected a tractor trailer on VT Rte. 22a in Shoreham. The CMV was stopped for having no operable tail lamps on the trailer at dawn in dense fog. The trailer was placed out of service for no operable brake lamps and no operable turn signals.**



- **10/15 Cpl. Morris inspected a dump truck at the Cambridge detail. The inspection revealed a tire on the dump truck was severely deflated. The dump truck was placed out of service for repair.**



#### **Passenger Carrier:**

- **Nothing to report.**

#### **NORTHEAST SECTOR:**

##### **Details:**

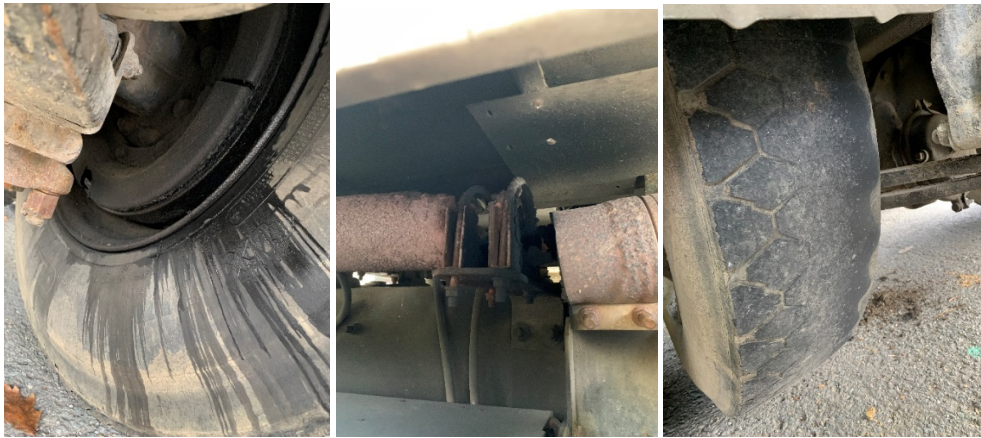
- **10/12 Coventry Village, US Rte 5. Four Inspectors screened 52 vehicles. Fourteen inspections were completed. Twenty-six vehicle (nine out of service violations) and two driver violations were discovered.**
- **10/14 Waterford Welcome Center, I-93 North. Four Inspectors screened 107 vehicles. Eleven inspections were completed. Twenty-one (three out of service) and three driver violations were discovered.**

### Crashes:

- **Nothing to report.**

### Notables:

- **10/11 Charleston, Vt Rte 105. An Inspector stopped a CMV for inoperable stop lamps. An inspection was conducted and the CMV placed out of service.**
- **10/11 Coventry, I-91 N. A Level 1 inspection was completed on a CMV and the CMV was placed out of service for defective brakes.**
- **10/12 Coventry Village detail. An Inspector conducting a level 1 inspection placed the CMV out of service for a blown diaphragm on a steer axle air brake chamber. This condition causes a reduced braking power on one side which the driver must compensate for to avoid the CMV leaving its lane of travel upon brake application.**
- **10/12 Coventry Village detail. An Inspector completed a Level 1 inspection. The CMV had numerous serious defects and was placed OOS for a flat tire, leaking wheel inner wheel seal with brake contamination, more than 20% of its brakes were out of adjustment. Additionally, there was an exhaust leak under the cab of the truck.**



- **10/12 Coventry Village detail. An Inspector conducting a Level 1 inspection placed the CMV out of service for defective brakes and a leaking inner seal which also contaminated the brake linings. A leaking inner seal, if undetected, could lead to wheel bearing failure and separation of the hub and wheel from the CMV while in operation, a significant risk to the motoring public.**



- **10/12 Coventry Village detail. An Inspector conducting a Level 1 inspection on a six axle CMV placed the CMV out of service for defective brakes- greater than 20% of the brakes were defective.**



- **10/13 Barnet, US Rte 5. An Inspector stopped a CMV for a permit check. The CMV was found to be 16,000 lbs above its permitted weight of 99,000 lbs. A Level 2 inspection was completed. A ticket was issued to the company and the CMV was escorted to be offloaded.**





- **10/14 Waterford detail. An Inspector conducting a Level 1 inspection on a six axle CMV transporting logs placed the CMV out of service for defective brakes-worn brake linings and inoperative brakes.**



- **10/14 Waterford detail. An Inspector placed a five axle CMV out of service in combination after a trailer brake supply hose was found to be defective. A ticket was issued to the carrier.**

**New Entrant:**

- **Fourteen carriers contacted regarding audit, document uploads, inactivation, or closeout. Four audits completed. 33 hours.**

**Passenger Vehicles:**

- **No activity reported.**

**SOUTH SECTOR:**

**Details:**

- **10/12 Putney, I-91S, 5 Inspectors screened 181 vehicles. They completed 8 (7 Level 1 and 1 Level 2) inspections which resulted in 17 vehicle violations with 5 vehicles placed out of service. Inspectors checked 6 over-dimension permits and issued 2 CVSA stickers.**



- **10/14 Bennington, VT Rte 9E, 3 Inspectors screened 54 vehicles. They completed 6 level 1 inspections which resulted in 6 vehicle violations with one vehicle placed out of service. Inspectors checked 6 platform weighs and checked 6 over-dimension permits.**
- **10/14 Stockbridge, VT Rte 107, 2 Inspectors screened 33 vehicles and completed 5 (3 level 2 and 2 level 3) inspections. Inspectors discovered 4 vehicle violations and placed two vehicles out of service.**
- **10/15 Stockbridge, VT Rte 107 (morning detail) and Bridgewater, US Rte 4 (afternoon detail), 2 Inspectors screened 51 vehicles and completed 12 (7 level 2 and 5 level 3) inspections. Inspectors discovered 6 vehicle violations and placed 3 vehicles out of service.**

**Crashes:**

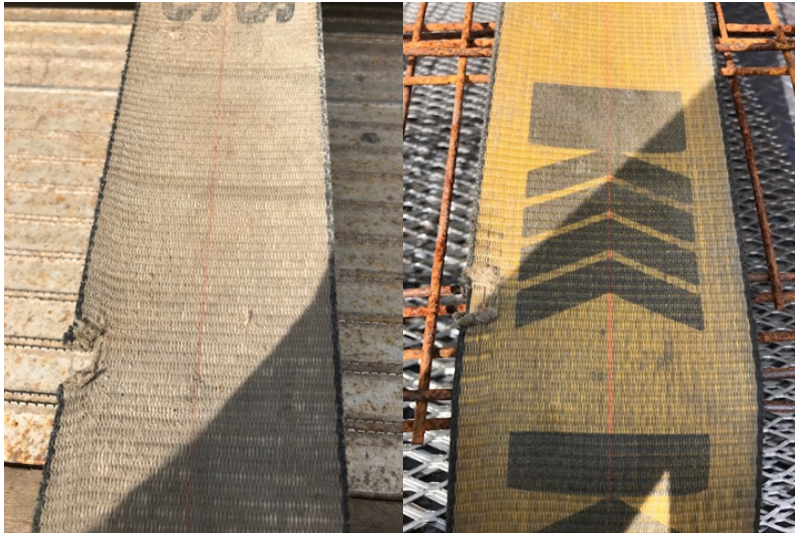
- **Nothing to report.**

**Notables:**

- **10/12 Inspector discovered a tire with a missing section of tread during an inspection at the Putney Scale House. Another tire was also found flat. The vehicle was placed out of service and repairs were made on site.**



- **10/12 Inspector discovered several synthetic straps that had cuts and pull marks. The accumulation of damage did not place the straps out of service.**



- **10/12 Inspector discovered a cut with an audible air leak on the emergency/supply air line to the trailer of a combination vehicle. The trailer was placed out of service while in combination and repaired roadside.**



- **10/12 Inspector discovered an audible air leak at a brake chamber due to a blown diaphragm during a level 1 inspection at the Putney Scale House. The vehicle was unable to maintain air pressure and failed the air drop test. The CMV was placed out of service and repaired on site.**



- **10/12 Inspector discovered unsecured items on the deck of a CMV during an inspection at the Putney Scale House. The CMV was placed out of service until the items were secured.**





- **10/12 Inspector discovered a missing cotter pin while conducting a Level 1 inspection at the Putney detail. The CMV was placed out of service for multiple brake issues.**



- **10/12 Inspector discovered a tire with a bulge due to sidewall separation during an inspection at the Putney Scale House. The vehicle was placed out of service and the tire ruptured during the inspection.**



- **10/13 Inspector discovered several brakes out of adjustment while conducting a Level 1 inspection at the Bridgewater detail. The CMV was put out of service for the 20% brake criteria. At the time of the inspection the brake was inoperable, and the brake liner did not touch the brake drum.**



- **10/14 Inspector completed a Level 1 inspection of a 5-axle combination vehicle and found multiple cracks in the brake linings and a separation from the brake shoe. The vehicle was placed out of service until repaired.**



- **10/14 Inspector discovered a significant sidewall crack, which extended around the hub of the tire. The damage extended down into the metal belt. The CMV was placed out of service.**
- **10/15 Inspector discovered a bald/flat tire on a trailer while conducting a level 2 inspection in Bridgewater.**



- **10/15 Inspector discovered unsecured flammable gas cylinders in a CMV during a hazmat inspection on UD Rte 4 in Bridgewater. The vehicle was placed out of service until the cylinders were properly secured.**



