

## **COMMERICAL VEHICLE ENFORCEMENT UNIT**

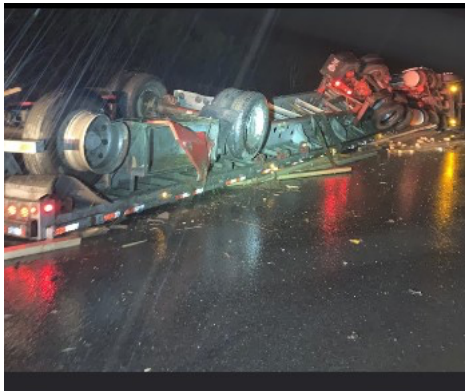
### **NORTHEAST SECTOR:**

#### **Details:**

- **12/06, West Danville, US Rte 2. Three Inspectors screened 68 vehicles. Twelve inspections were completed. Seven vehicle and two driver violations were discovered.**
- **12/08, Ryegate, I 91 N. Four Inspectors screened 112 vehicles. Sixteen inspections were completed. Nine vehicle (one out of service) and two driver (one out of service) violations were discovered. One ticket was issued.**

#### **Crashes:**

- **12/06, Barnet, I 91. An Inspector responded after hours to a single CMV reportable crash. A Level 1 inspection was completed. The operator of the CMV advised that he had swerved to avoid a deer. The CMV was laden with lumber. No injuries were reported.**



- **12/09, Lunenburg, US Rte 2. Inspectors responded to a single CMV reportable crash. The operator of the five axle tractor trailer advised that he was crowded by a plow truck and went off the road. The driver went to a local hospital to be treated for minor injuries. A Level 2 inspection was completed.**



- **12/09, Middlesex, I 89 N. An Inspector responded to a reportable passenger vehicle versus CMV crash. The operator of the passenger vehicle failed to yield to the CMV, a six axle CMV laden with feed, in the left passing lane. The right front CMV struck the passenger vehicle and caused it to spin off the road. There were no reported injuries. A Level 2 inspection was completed.**

**Notables:**

- **12/06-12/10 Inspector Hailey was at the Vermont Police Academy for the week as a Training Assistant to the full-time basic police academy class. His role for the week was to assist the recruits in training and to provide mentorship afterhours while not in class.**
- **12/06 Danville, an Inspector placed the operator of a CMV OOS for not having a medical card while operating a CMV in Interstate commerce. A query of previous inspections showed that the operator had been inspected on two previous occasions and was issued violations for not having a medical card.**
- **12/07 Inspector Jacobs attended the Red Ribbon Ceremony in Montpelier.**
- **12/08, Ryegate detail. An Inspector placed a CMV OOS for a flat tire and also conducted a portable weigh on the CMV. The CMV was found to be 14,400lbs over its permitted weight, the carrier was issued a VCVC.**



- **12/10, Orleans, VT Rte 58. A four axle CMV transporting logs was observed at a junction with a town road without any load securement for the logs. The driver advised that he had difficulty putting straps over the logs. A Level 2 inspection was completed, the CMV was placed out of service for the load securement violation, and a ticket was issued to the company.**



#### **New Entrant:**

- **Eight carriers contacted regarding audit, document uploads, inactivation, or closeout. One audit completed. 22.5 hours.**

#### **Passenger Vehicles:**

- **No activity reported.**

#### **Compliance Review:**

## **NORTHWEST SECTOR:**

### **Details:**

- **12/7 I89 Colchester NB, 6 inspectors screened 316 vehicles. They completed 23 inspections which resulted in 17 vehicle and 5 driver violations. Five vehicles and one driver were placed out of service.**
- **12/9 Rte. 4 Fair Haven Scale House, 7 inspectors screened 83 vehicles. They completed 17 inspections which resulted in 12 vehicle and 5 driver violations. Two vehicles and one driver were placed out of service. Detail opening was delayed due to snow on the roadway and snow/ice buildup on the scales.**

### **Crashes:**

- **Nothing to report.**

### **Notables:**

- **12/6 Inspector stopped an interstate tractor trailer for an inoperable lamp on I89 in Colchester. The trailer was placed out of service for an inoperable rear turn signal.**



- **12/6 Inspector stopped a tractor trailer unit operating on I89 in Colchester for an equipment defect. A subsequent inspection revealed a glad hand hose was chafed through the inner reinforcement ply. The combination was placed out of service for repair.**





- **12/6 Inspector stopped a truck and car hauler trailer on I89 in Richmond for a registration infraction, no plate. A subsequent inspection revealed the trailer was not registered, the stop lamps and rearmost turn signals were inoperative on the trailer and the breakaway device on the trailer was inoperative. The vehicle was placed out of service and grounded. The carrier was ticketed.**



- **12/6 Inspector stopped a box truck for speeding on Rte. 22a in Orwell. The driver was also the owner of the company. The company had no USDOT number and no operating authority. The driver did not have a medical certificate or logs as required. The driver and truck were placed out of service for the associated violations.**



- **12/7 Inspector inspected an interstate tractor trailer at the Colchester detail. The trailer had no working lights and was placed out of service.**



- **12/7 Inspector inspected a tractor trailer at the Colchester detail. The trailer was placed out of service for a tire that was leaking air from a piece of metal in the tread.**



- **12/7 Inspector inspected a tractor trailer at the Colchester detail. The trailer was placed out of service for a flat tire.**





- **12/7 Inspector while enroute to the Colchester detail, was traveling north on US Rte. 7 in New Haven when Kia Soul traveling south approximately 100 feet away from him crossed the center line and swerved back into its lane. A traffic stop was conducted. Investigation revealed several signs of intoxication. The driver was placed under arrested and processed for DUI- Alcohol at the New Haven barracks.**
- **12/8 Cpl. Paul was dispatched to a box truck crash on Rte. 2 in Bolton. The vehicle was not subject to the FMCSRs. VSP asked that the brakes be checked as the driver said they weren't working. Brakes were found to be in adjustment and no brake violations were noted.**



- **12/8 Inspector inspected a tractor trailer on Rte. 22a in Shoreham. The truck tractor was placed out of service for a flat tire, the trailer was placed out of service for a flat tire, and the driver was placed out of service for a false log.**





- **12/9 Inspector inspected a tractor trailer unit at the Fair Haven detail. The inspection revealed the driver's CDL was disqualified for failing to submit his medical card to VT DMV. The driver was placed out of service for the violation.**
- **12/9 Inspector inspected a truck and trailer on Rte. 22a in Shoreham. The trailer was placed out of service as a synthetic webbing strap was defective and therefore not properly securing the load on the trailer.**



- **12/10 Inspector stopped a box truck for an inoperable head lamp on Rte. 22a in Orwell. An inspection was conducted and the driver was placed out of service for being in possession of marijuana and false log. His license was also suspended in his licensing State. The driver was ticketed for possession of marijuana in a commercial motor vehicle.**



**Passenger Carrier:**

- **Nothing to report.**

**High Priority:**

- **Nothing to report.**

**SOUTH SECTOR:**

**Details:**

- **12/7 Springfield NB, I-91, 3 Inspectors screened 141 vehicles. They completed 7 inspections which resulted in 2 vehicle and 4 driver violations. One vehicle was placed out of service.**



- **12/9 Emerald Lake, US Rte. 7, 5 Inspectors screened 47 vehicles. They completed 14 inspections which resulted in 8 vehicle and 1 driver violations. One vehicle and one driver were placed out of service.**



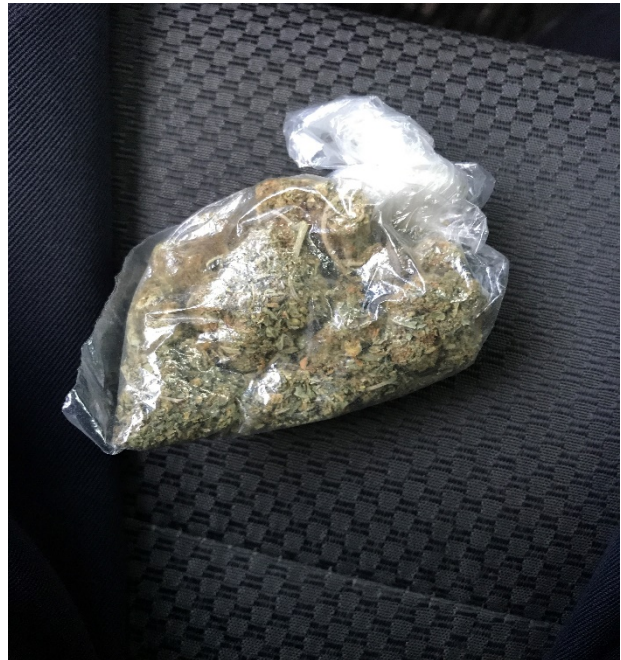
- **12/10 HP Rockingham, VT Rte. 103, 2 Inspectors screened 63 vehicles. They completed 8 inspections which resulted in 11 vehicle violations and 4 driver violations. One vehicle was placed out of service.**





#### Crashes:

- 12/9 Inspector responded to a crash on I89 involving a box truck that rear ended an AOT plow truck. There were no injuries and only minor damage, however while conducting the inspection, Inspector Cuttita noticed an odor of marijuana. The driver had approximately ¼ ounce of marijuana in his possession, was placed out of service for 24 hours, and issued a VCVC.



#### Notables:

- **12/6 Inspector placed a CMV out of service during a traffic stop on VT Rte 107 in Stockbridge for no rear lights. The driver's remote light bar was inoperable, and the rear of the vehicle had no turn signals or brake lights.**



- **12/6 Inspector followed up on a Total Abstinence investigation where he had to obtain a urine sample in the evening.**
- **12/7 Inspector placed a trailer out of service for a commodity specific load securement defect. The third tier of lumber lacked its own strapping. The operator was able to correct the defect at the detail and continue his trip.**





- **12/7 Inspectors Cuttita, Armstrong, and Jacobs attended the Red Ribbon Ceremony at the State House in Montpelier.**





- **12/7 Inspector completed an inspection on a tractor trailer truck that entered the Springfield Detail with smoking brakes on the trailer. The vehicle was placed out of service.**



- **12/9 Inspector discovered broken leaf spring assemblies on the steer axle of a ready-mix concrete mixer truck at the Emerald Lake detail. The vehicle was placed out of service.**



- **12/10 Inspector placed a CMV out of service for a deflated tire. The inner tire was deflated to 20 PSI and was rubbing on its mate in a dual set.**



- **12/10 Inspector discovered an unassigned IFTA sticker. The CMV's ME trailer plate was assigned to another company and trailer; the truck tractor had no plates and an expired TN registration paperwork from 2013.**





- **12/10 Inspector discovered an active and significant power steering leak during a level 2 inspection at the Rockingham detail. The leak originated from the power steering gear box. The fluid cap was inadequately being held on with a zip tie.**



